

TRY A TRADE WHILE AT HIGH SCHOOL



Bay of Plenty
FUTURES
ACADEMY



2026 PROGRAMME GUIDE

100

101

102

103

104

105

106

107

108

109

110

111

112

113

114

115

116

117

118

119

120

121

122

123

124

125

126

127

128

129

130

131

132

133

134

135

136

137

138

139

140

141

142

143

144

145

146

147

148

149

150

151

152

153

154

155

156

157

158

159

160

161

162

163

164

165

166

167

168

169

170

171

172

173

174

175

176

177

178

179

180

181

182

183

184

185

186

187

188

189

190

191

192

193

194

195

196

197

198

199

200

201

202

203

204

205

206

207

208

209

210

211

212

213

214

215

216

217

218

219

220

221

222

223

224

225

226

227

228

229

230

231

232

233

234

235

236

237

238

239

240

241

242

243

244

245

246

247

248

249

250

251

252

253

254

255

256

257

258

259

260

261

262

263

264

265

266

267

268

269

270

271

272

273

274

275

276

277

278

279

280

281

282

283

284

285

286

287

288

289

290

291

292

293

294

295

296

297

298

299

300

301

302

303

304

305

306

307

308

309

310

311

312

313

314

315

316

317

318

319

320

321

322

323

324

325

326

327

328

329

330

331

332

333

334

335

336

337

338

339

340

341

342

343

344

345

346

347

348

349

350

351

352

353

354

355

356

357

358

359

360

361

362

363

364

365

366

367

368

369

370

371

372

373

374

375

376

377

378

379

380

381

382

383

384

385

386

387

388

389

390

391

392

393

394

395

396

397

398

399

400

401

402

403

404

405

406

407

408

409

410

411

412

413

414

415

416

417

418

419

420

421

422

423

424

425

426

427

428

429

430

431

432

433

434

435

436

437

438

439

440

441

442

443

444

445

446

447

448

449

450

451

452

453

454

455

456

457

458

459

460

461

462

463

464

465

466

467

468

469

470

471

472

473

474

475

476

477

478

479

480

481

482

483

484

485

486

487

488

489

490

491

492

493

494

495

496

497

498

499

500

501

502

503

504

505

506

507

508

509

510

511

512

513

514

515

516

517

518

519

520

521

522

523

524

525

526

527

528

529

530

531

532

533

534

535

536

537

538

539

540

541

542

543

544

545

546

547

548

549

550

551

552

553

554

555

556

557

558

559

560

561

562

563

564

565

566

567

568

569

570

571

572

573

574

575

576

577

578

579

580

581

582

583

584

585

586

587

588

589

590

591

592

593

594

595

596

597

598

599

600

601

602

603

604

605

606

607

608

609

610

611

612

613

614

615

616

617

618

619

620

621

622

623

624

625

626

627

628

629

630

631

632

633

634

635

636

637

638

639

640

641

642

643

644

645

646

647

648

649

650

651

652

653

654

655

656

657

658

659

660

661

662

663

664

665

666

667

668

669

670

671

672

673

674

675

676

677

678

679

680

681

682

683

684

685

686

687

688

689

690

691

692

693

694

695

696

697

698

699

700

701

702

703

704

705

706

707

708

709

710

711

712

713

714

715

716

717

718

719

720

721

722

723

724

725

726

727

728

729

730

731

732

733

734

735

736

737

738

739

740

741

742

743

744

745

746

747

748

749

750

751

752

753

754

755

756

757

758

759

760

761

762

763

764

765

766

767

768

769

770

771

772

773

774

775

776

777

778

779

780

781

782

783

784

785

786

787

788

789

790

791

792

793

794

795

796

797

798

799

800

801

802

803

804

805

806

807

808

809

810

811

812

813

814

815

816

817

818

819

820

821

822

823

824

825

826

827

828

829

830

831

832

833

834

835

836

837

838

839

840

841

842

843

844

845

846

847

848

849

850

851

852

853

854

855

856

857

858

859

860

861

862

863

864

865

866

867

868

869

870

871

872

873

874

875

876

877

878

879

880

881

882

883

884

885

886

887

888

889

890

891

892

893

894

895

896

897

898

899

900

901

902

903

904

905

906

907

908

909

910

911

912

913

914

915

916

917

918

919

920

921

922

923

924

925

926

927

928

929

930

931

932

933

934

935

936

937

938

939

940

941

942

943

944

945

946

947

948

949

950

951

952

953

954

955

956

957

958

959

960

961

962

963

964

965

966

967

968

969

970

971

972

973

974

975

976

977

978

979

980

981

982

983

984

985

986

987

988

989

990

991

992

993

994

995

996

997

998

999

1000

CONTENTS

WELCOME.....	2
VOCATIONAL PATHWAYS.....	3
COURSE INFORMATION.....	4
COURSES IN YOUR REGION	5

COURSES

PRIMARY INDUSTRIES	
AHUMAHİ MATUA	8
Scuba Diving L3	9
Farming & Agriculture L2	10
Farming and Agriculture L3.....	10
Forestry L2.....	11
SERVICE INDUSTRIES	
AHUMAHİ RATONGA.....	12
Hairdresser/Barber Foundation Programme L2-3.....	13
Hair Retail and Beauty L2	15
Barbering L2.....	16
Makeup and Skin Care NZ Certificate L3.....	17
Café and Catering L2.....	18
NZ Certificate in Cookery L3.....	19
Hospitality L2.....	20
NZ Certificate in Food and Beverage L3	21
Sport, Exercise & Coaching L2-3	22
Leadership Skills in Sport and Outdoor Recreation L3.....	23
Tourism, Travel & Events L3.....	24
Māori Tourism Te Ara Tāpoi L3.....	25
CREATIVE INDUSTRIES	
AHUMAHİ AUHA.....	26
Fashion & Design L2	27
Māori Carving / Whakairo L2 Cohort.....	28
Wānanga Noho.....	29

SOCIAL & COMMUNITY SERVICES	
RATONGA PĀPORI, RATONGA HAPORI.....	30
Whānau Ora Pōkaitahi L3	31

CONSTRUCTION & INFRASTRUCTURE	
TE MAHI HANGA ME TE PŪTOI HANGANGA ...	32
Construction L2	33
Carpentry & Joinery L3.....	34
Allied Trades Training (ATT) L2-3.....	35
Building and Construction L2 (Cohort).....	36
Civil Infrastructure (Cohort) L2.....	37
Caravan Restoration L2.....	38
Building Academy L3.....	39
Construction Academy L2-3.....	40

MANUFACTURING & TECHNOLOGY	
TE WHAKANAO ME TE HANGARAU.....	41
IT Support L2&3	42
Game Design L3.....	43
Spark Your Potential L2.....	44
Electrical Pre-Trade Programme L3	45
Solid Wood Manufacturing L2-3	47
Wood Manufacturing L2.....	49
Build A Go Kart L2.....	50
Automotive Engineering L2	51
Automotive Engineering L3	52
Electric Scooter Project L2.....	53
Mechanical Engineering L2	54

BAY OF PLenty FUTURES ACADEMY.....	55
KURA, SCHOOLS & TRAINING PROVIDERS....	56



EMPOWERING FUTURES THROUGH TRADES TRAINING ACROSS THE BAY OF PLENTY

WHY FUTURES ACADEMY?

WHERE HANDS-ON LEARNING MEETS THE FUTURE OF WORK

Futures Academy gives senior high school students the chance to step beyond the classroom and into real-world learning – gaining practical skills in trades and technologies that are shaping tomorrow's workforce.

Since 2009, we've been connecting students/ ākonga across the Bay of Plenty with high-quality, hands-on training that leads to genuine career pathways. Our programmes are designed to meet the needs of modern industries, giving students a head start in employment, apprenticeships, or further study – all while still at school.

Through Futures Academy, students can:

- Earn NCEA Level 2 & 3 credits
- Achieve tertiary credits or qualifications in many courses
- Learn practical, job-relevant skills
- Discover personal strengths through industry exploration
- Train for free – funded by the Ministry of Education

REAL SKILLS REAL OPPORTUNITIES REAL FUTURES

Futures Academy is more than just an education option – it's a smart investment in a young person's future. By combining school with hands-on trades training, students gain transferable employment skills while still in high school.

FOR STUDENTS, IT MEANS

- Discovering what they're good at through practical, real-world learning
- Gaining skills and confidence that employers value
- Earning NCEA credits while exploring career and study options
- Accessing free training, workplace visits, and industry trips
- Building connections with local businesses and training providers
- Preparing for employment, apprenticeships, or further study with purpose and direction
- Some students may also earn New Zealand Certificates, which are NZQA qualification that employers value

FOR PARENTS AND CAREGIVERS, IT MEANS

- Knowing your child is gaining valuable, work-ready skills
- Seeing them explore careers early – with support of their High School
- Confidence they're guided by expert providers with industry links
- A pathway that supports both academic and personal success
- No extra cost – all training is fully funded by the Ministry of Education

WHAT'S IN IT FOR ME?





Social & Community Services

Ratonga Pāpori,
Ratonga Hapori



Construction & Infrastructure

Te Mahi Hanga me
te Pūtoi Hangaga



Manufacturing & Technology

Te Whakanao me te
Hangarau



Primary Industries (Food & Fibre)

Ahumahi
Matua



Service Industries

Ahumahi
Ratonga



Creative Industries

Ahumahi
Auaha



Vocational Pathways

LINKING LEARNING TO REAL CAREERS

Vocational Pathways are a framework that helps students see how their learning and achievements relate to future job opportunities. They provide clear guidance on how NCEA credits can be aligned to career options across six key sectors:

- **Primary Industries**
- **Services Industries**
- **Creative Industries**
- **Social & Community Services**
- **Construction & Infrastructure**
- **Manufacturing & Technology**

FOR MORE INFORMATION ABOUT VOCATIONAL PATHWAYS, VISIT:

- Youth Guarantee Website
- Tahatū – Career Navigator website
- Your school's Careers Advisor

TRADES FOR TODAY – AND TOMORROW

Modern trades are evolving. Futures Academy prepares students not only for traditional trades but also for fast-growing fields like **technology** and **engineering** – where innovation and hands-on skills go hand in hand.

Programmes are delivered by expert providers and tailored to support each student's unique goals.

READY TO GET STARTED?

This is a fantastic opportunity to gain real-world skills and shape your future – all while still at high school.

Talk to your school's Careers Advisor to learn more, explore available programmes, and start your application.

START BUILDING FUTURE PATHWAYS TODAY – TOGETHER

FUTURES ACADEMY YOUR SKILLS. YOUR PATH. YOUR FUTURE.



COURSE INFORMATION

COURSE TYPES

FOUNDATION

- Focus on building foundational skills in one trade area.
- Typically at Level 2.
- Run 1 day per week, over 30 weeks (except for some industry courses).

ADVANCED

- Offer in-depth skills and theory-based training.
- Help students earn credits toward industry certificates or directly enter apprenticeships, employment, or further training.
- Generally, at Level 3.
- Run 2–3 days per week over 30 weeks.
- The Futures Academy also partners with industry to provide work based training opportunities to our students and these courses may be on offer more intensively (3+ days a week).

WORK-BASED TRAINING

- Provided through direct partnerships with industry.
- Students interviewed by worksites before acceptance to ensure understanding, commitment, and fit.
- May include paid work opportunities.

COHORT

- Designed for groups of students from the same school.
- Usually runs as intensive noho-style blocks of 1 week, 3–4 times per year or 1 day per week over 30 weeks.
- Typically, Level 2 courses.

DATES

- Courses generally run Terms 1 to 3 of the school year, with a few courses running into term 4.
- Catch-up days are scheduled over school holidays or early Term 4 to help students complete missed work before exams.

ENROLMENT

- Due to high demand and limited spaces, not all applicants will be accepted.
- School Careers Advisors interview applicants and assess:
 - Motivation and personal goals
 - School attendance
 - Relevant experience and skill base
 - Ability to balance trades and in-school learning
 - Completed application with caregiver support
 - Complementary work experience opportunities

** Students accepted must maintain 100% attendance in both trades and school courses to get the most benefit.*

TRANSPORT

- Transport may be available for some courses, depending on Ministry of Education Transportation Policy criteria.
- Students accepted into local courses are generally responsible for their own transport.
- For courses in other regions, limited group transport might be available, depending on the number of students and affordability.
- Many Tauranga and Rotorua city centre courses are accessible by public transportation.
- Your school's Careers Advisor can help explore transport options if your place in Futures Academy is confirmed.

APPLICATION TIMELINE

- Providers review applications by: **Early Term 4**
- Initial acceptance by: **End of Term 4**
- Courses start: **2nd week of February**
- Second application cut-off: **Mid-February**

COURSES IN YOUR REGION

EASTERN BAY OF PLENTY | WHAKATĀNE

Allied Trades Training (ATT) L2-3	Trident Trades Training	35
Automotive Engineering L2	Toi Ohomai	51
Automotive Engineering L3	Toi Ohomai	52
Barbering L2	Toi Ohomai	16
Building Academy L3	Eastern Bay Trades Academy	39
Building and Construction L2 (Cohort)	Te Wānanga o Aotearoa	36
Café and Catering L2	Trident Trades Training	18
Caravan Restoration L2	Tarawera High School	38
Carpentry & Joinery L3	Toi Ohomai	34
Civil Infrastructure (Cohort) L2	Te Wānanga o Aotearoa	37
Construction L2	Toi Ohomai	33
Construction Academy L2-3	Whakatāne High School	40
Electrical Pre-Trade Programme L3	ETCO	45
Hair Retail and Beauty L2	Toi Ohomai	15
Hairdresser/Barber Foundation Programme L2-3	Hair to Train	13
Makeup and Skin Care NZ Certificate L3	Toi Ohomai	17
Māori Carving / Whakairo L2 Cohort	Te Wānanga o Aotearoa	28
Solid Wood Manufacturing L2-3	Woodwise	47
Spark Your Potential L2	ETCO	44
Sport, Exercise & Coaching L2-3	Trident Trades Training	22
Wānanga Noho	Trident Trades Training	29

ROTORUA

Automotive Engineering L2	Toi Ohomai	51
Automotive Engineering L3	Toi Ohomai	52
Barbering L2	Toi Ohomai	16
Build A Go Kart L2	Toi Ohomai	50
Carpentry & Joinery L3	Toi Ohomai	34
Civil Infrastructure (Cohort) L2	Te Wānanga o Aotearoa	37
Construction L2	Toi Ohomai	33



Electric Scooter Project L2	Toi Ohomai	53
Electrical Pre-Trade Programme L3	ETCO	45
Farming & Agriculture L2	Toi Ohomai	10
Farming and Agriculture L3	Toi Ohomai	10
Forestry L2	Toi Ohomai	11
Game Design L3	Toi Ohomai	43
Hairdresser/Barber Foundation Programme L2-3	Hair to Train	13
Hair Retail and Beauty L2	Toi Ohomai	15
Hospitality L2	Toi Ohomai	20
Leadership Skills in Sport and Outdoor Recreation L3	Toi Ohomai	23
Makeup and Skin Care NZ Certificate L3	Toi Ohomai	17
Mechanical Engineering L2	Toi Ohomai	54
NZ Certificate in Cookery L3	Toi Ohomai	19
NZ Certificate in Food and Beverage L3	Toi Ohomai	21
Spark Your Potential L2	ETCO	44
Tourism, Travel & Events L3	Toi Ohomai	24
Whānau Ora Pōkaitahi L4	Takitini	31
Wood Manufacturing L2	Toi Ohomai	49

TAURANGA

Automotive Engineering L2	Toi Ohomai	51
Automotive Engineering L3	Toi Ohomai	52
Barbering L2	Toi Ohomai	16
Build A Go Kart L2	Toi Ohomai	50
Carpentry & Joinery L3	Toi Ohomai	34
Civil Infrastructure (Cohort) L2	Te Wānanga o Aotearoa	37
Construction L2	Toi Ohomai	33
Electric Scooter Project L2	Toi Ohomai	53
Electrical Pre-Trade Programme L3	ETCO	45
Farming & Agriculture L2	Toi Ohomai	10
Farming and Agriculture L3	Toi Ohomai	10
Fashion & Design L2	Toi Ohomai	27



Game Design L3	Toi Ohomai	43
Hair Retail and Beauty L2	Toi Ohomai	15
Hairdresser/Barber Foundation Programme L2-3	Hair to Train	13
Hospitality L2	Toi Ohomai	20
IT Support L2&3	Employ NZ	42
Makeup and Skin Care NZ Certificate L3	Toi Ohomai	17
Mechanical Engineering L2	Toi Ohomai	54
NZ Certificate in Cookery L3	Toi Ohomai	19
NZ Certificate in Food and Beverage L3	Toi Ohomai	21
Scuba Diving L3	Dive Zone Tauranga	9
Solid Wood Manufacturing L2-3	Woodwise	47
Spark Your Potential L2	ETCO	44
Tourism, Travel & Events L3	Toi Ohomai	24

TAUPO

Automotive Engineering L2	Toi Ohomai	51
Automotive Engineering L3	Toi Ohomai	52
Carpentry & Joinery L3	Toi Ohomai	34
Civil Infrastructure (Cohort) L2	Te Wānanga o Aotearoa	37
Construction L2	Toi Ohomai	33
Electrical Pre-Trade Programme L3	ETCO	45
Hairdresser/Barber Foundation Programme L2-3	Hair to Train	13
Māori Tourism Te Ara Tāpoi L3	Te Kura o Hirangi	25

WAIKATO SOUTH | TOKOROA

Automotive Engineering L2	Toi Ohomai	51
Automotive Engineering L3	Toi Ohomai	52
Carpentry & Joinery L3	Toi Ohomai	34
Civil Infrastructure (Cohort) L2	Te Wānanga o Aotearoa	37
Construction L2	Toi Ohomai	33

**FINAL COURSE LOCATIONS WILL DEPEND ON
ADEQUATE ENROLMENT NUMBERS, STAFFING AND
FUNDING**



GROW YOUR FUTURE FROM THE GROUND UP!



WHAT ARE THE PRIMARY INDUSTRIES?

The Primary Industries include all the sectors that grow, harvest, and manage natural resources – like land, animals, and plants. These industries feed, fuel, and clothe the world – and in Aotearoa, they're a vital part of our economy and identity.

THIS PATHWAY INCLUDES SECTORS LIKE:

- Agriculture & Farming
- Horticulture & Viticulture (fruit, veges)
- Apiculture (beekeeping)
- Forestry
- Aquaculture & Fishing
- Conservation & Environmental Management

IS THIS THE PATHWAY FOR YOU?

- Do I enjoy being outside and staying active?
- Am I interested in how food is grown or how forests are managed?
- Do I care about sustainability and looking after the environment?
- Do I like practical, hands-on tasks more than sitting at a desk?
- Would I like to work with animals, machinery, or nature?

If you answered yes to any of these, the Primary Industries Vocational Pathway could be the right fit for you.

WHAT JOBS COULD I DO?

You might be surprised at how many career options exist in the Primary Industries, including:

Entry-Level Jobs

Farm Assistant, Nursery Worker, Forestry Labourer, Fruit Picker or Packer, General Hand in Horticulture, Dive Center Intern

With Training or Experience

Divemaster, Tractor/Machinery Operator, Irrigation Technician, Dairy or Sheep Farmer, Animal Health Technician

Specialist/Professional Roles

Farm or Orchard Manager, Agribusiness Consultant, Environmental Scientist, Conservation Ranger, Viticulturist (Grape Scientist), Agricultural Engineer

WHAT CAN I EARN?

Earnings vary depending on the role and level of experience:

- Entry-level roles often start around **\$45,000 – \$55,000** per year.
- With a few years of experience or technical skills, this can rise to **\$60,000 – \$80,000**.
- Managers, consultants, or specialists can earn **\$100,000+**, particularly in agribusiness or environmental science.

Plus, many roles come with **free or subsidised accommodation**, especially in rural areas – that's more money in your pocket.

THE FUTURE IS GREEN (AND GROWING)

The Primary Industries are evolving. Technology, science, and sustainability are transforming traditional farming into smart, future-focused careers. You could work with drones, develop eco-friendly systems, or help protect biodiversity. These industries need passionate, skilled people – now more than ever.



SCUBA DIVING L3

GAIN A NZ CERTIFICATE IN DIVING

Love the ocean? Want a job that's exciting, hands-on, and far from ordinary? Try this trades course to see if a career under the water is for you.

With Dive Zone Tauranga, you'll train to become a certified scuba diver and begin a pathway to working anywhere in the world – from tropical reefs to marine research labs.

Dive Zone Tauranga is a 5 Star PADI Instructor Development Centre and a delivery site for the Academy of Diving Trust. This course is designed to take you from beginner to advanced diver, with the PADI Open Water, Advanced, and Rescue Diver certifications – the essential foundation for becoming a Divemaster, Dive Instructor, or working in marine biology, adventure tourism, and more.

You'll train in pools, lakes, and the ocean – and complete up to 40 dives during the course!

KEY DETAILS

Course delivery	Terms 1-3, 1 day per week
Location	Dive Zone Tauranga. Diving at Lake Rotoma and out from Tauranga
NCEA level	3

FUTURE PATHWAYS

Diploma In Scuba Instruction, Adventure Tourism, Marine Studies, Commercial Diving, Underwater Construction, Navy Diver, Boat Skippers

FUTURE CAREERS

Dive Instructor, Dive Guide, Dive Retail, Adventure Tourism, Military, Commercial Diving, Super Yacht Crew, Boat Charter Crew, Outdoor Education, Tourism Guide

	UNIT STD	LEVEL	CREDITS
28392	Scuba dive in open water to a maximum depth of 18m	3	7
28407	Complete scuba dives off a boat in open water	3	3
28408	Complete scuba dives off the shore in open water	3	4
28395	Complete diver rescues	3	7
TOTAL			21



FARMING & AGRICULTURE L2 & L3

EVER THOUGHT ABOUT A FUTURE IN FARMING?

KEY DETAILS

Course delivery	Terms 1-3 L2 - 1 day per week L3 - 2 days per week
Location	ROT, TGA if sufficient numbers
NCEA level	2 & 3

FARM & AG L2

This hands-on course introduces students to the essential skills required for a career in farming and agriculture. Learn practical tasks like livestock handling, fencing, and safe machinery use while gaining valuable knowledge about animal welfare and farm safety. Weekly trips to a variety of working farms give students the chance to apply their learning in real-world settings. A great starting point for anyone interested in the primary industries.

	UNIT STD	LEVEL	CREDITS
19114	Assist with handling and treatment of livestock	2	6
19116	Demonstrate knowledge of livestock behaviour and welfare in a primary industry operation	2	3
31656	Demonstrate knowledge of safe work practices in a primary industry operation V1 L2 10CR	2	10
24834	Replace a broken post and repair a broken wire in fences	2	5
24540	Maintain and use a petrol-powered brush cutter	2	2
24555	Demonstrate knowledge of the safe operation of motorcycle	2	3
TOTAL			29

FARM & AG L3

Step into more advanced on-farm responsibilities with this Level 3 course designed for students who are serious about a future in agriculture. Over two days each week, you'll gain hands-on experience across livestock health, animal handling, chainsaw operation, and seasonal farm tasks such as lamb docking. Learn practical, real-world skills in a supportive environment while building a strong foundation for employment or further training in the primary industries.

	UNIT STD	LEVEL	CREDITS
19115	Handle and move livestock	3	6
32009	Assist with the prevention, diagnosis and treatment of livestock health problems	3	16
29297	Operate and maintain a chainsaw in a land-based context	3	8
581	Dock and treat lambs	3	5
TOTAL			35

FUTURE PATHWAYS

NZ Certificate in Primary Industry Operational Skills (L3), NZ Certificate in Agriculture (Farming Systems) (L3), NZ Diploma in Primary Industry Business Management (L5)

FUTURE CAREERS

Farm Assistant, Shepherd, Milk Harvester, Livestock Manager, Farming

**Toi Ohomai course details and locations may change. Please contact careers advisers for the most up to date information.*



FORESTRY L2

GROW YOUR FUTURE OUTDOORS

If you want a career where the bush is your office, this course is the perfect starting point. Forestry Level 2 equips you with practical skills and knowledge to work safely and effectively in the forestry industry.

From operating machinery like chainsaws to understanding safe work practices and applying innovative thinking in a business context, you'll gain valuable experience to open pathways into roles such as machine operator, engineer, or forestry scientist.

KEY DETAILS

Course delivery	Terms 1-3, 1 day per week
Location	ROT
NCEA level	2

FUTURE PATHWAYS

NZ Certificate in Solid Wood Manufacturing (L3) Saw Doctoring and Timber Machining, NZ Certificate in Solid Wood Manufacturing (L4) Laminating, NZ Certificate in Forest Harvesting Operations (L3) Manual Processing and Quality Control, NZ Certificate in Forest Harvesting Operations (L3) Woodsman Programme; Quality Control or Basic Machine Operation

FUTURE CAREERS

Forestry Operations, Machine Repairs, Wood Manufacturing Operator, Saw Doctor

	UNIT STD	LEVEL	CREDITS
29297	Operate and maintain a chainsaw in a land-based context	2	8
22854	Apply innovative thinking within a business context	2	2
31656	Demonstrate knowledge of safe work practices in a primary industry operation	2	10
TOTAL			20

**Toi Ohomai course details and locations may change. Please contact careers advisers for the most up to date information.*



PEOPLE, PLACES, AND POSSIBILITIES!

WHAT ARE THE SERVICES INDUSTRIES?

This pathway covers the industries that keep the economy running and people connected. It's all about customer service, experiences, logistics, and daily life – from cafes and airlines to hair salons and call centres.

THIS PATHWAY INCLUDES SECTORS LIKE:

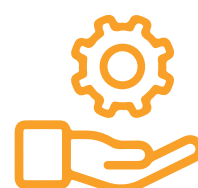
- Hospitality (hotels, cafés)
- Tourism
- Retail & Sales
- Beauty & Hairdressing
- Recreation & Sport
- Business and Financial Services (admin, contact centres, insurance & mortgage broker)
- Travel & Events
- Security & Logistics
- Cleaning

IS THIS THE PATHWAY FOR YOU?

- Do I enjoy working with people and making their day better?
- Am I interested in business, tourism, or customer service?
- Do I have a good attitude and enjoy fast-moving work?
- Would I like to run my own business or travel with my job?
- Am I organised, reliable, and good at communication?

If this sounds like you – there are endless directions you can take in this pathway.

WHAT JOBS COULD I DO?



Entry-Level Jobs

Barista or Waitstaff, Receptionist, Checkout Operator, Call Centre Agent, Cleaner or Housekeeper, Delivery Driver

With Training or Experience

Retail Store Manager, Beauty Therapist, Hotel Concierge, Fitness Instructor, Duty Manager Security Officer

Specialist/Professional Roles

Event Coordinator, Tourism or Hospitality Manager, Business Administrator, Travel Agent or Tour Operator, Sales Representative, Logistics Coordinator

WHAT CAN I EARN?

- Entry-level roles often start around **\$47,000 – \$55,000/year**, especially in hospitality or retail.
- With training or leadership roles, earnings rise to **\$60,000 – \$80,000**.
- Specialists and experienced professionals can earn **\$85,000+**, particularly in management, sales, or logistics.

Some jobs offer great travel opportunities, tips, bonuses, or flexibility – especially in tourism, events, or international business.

THE FUTURE OF SERVICE WORK

With the rise of technology, automation, and global business, services industries are evolving. There's strong demand for workers who are adaptable, customer-focused, and digitally confident – especially in business support, online retail, and hospitality innovation.



HAIRDRESSER/BARBER FOUNDATION PROGRAMME L2-3

DISCOVER THE WORLD OF HAIRDRESSING AND BARBERING

Tauranga Hair Design Academy, known as Hair to Train, has been shaping future stylists since 1997. Based in the Bay of Plenty, this boutique training provider offers an exciting, hands-on introduction to the hair industry through Futures Academy.

This practical and engaging programme gives you real insight into both hairdressing and barbering, including a foundation cutting workshop that lets you build confidence with the tools of the trade. Whether you're drawn to styling, cutting, or creative expression, this is the perfect place to begin your journey.

KEY DETAILS

Course delivery Terms 1-3, 1 day per week
In Term 3, choose a Barbering or Hairdressing Pathway

Location ROT, TPO, TGA, WHK

NCEA level 2-3

FUTURE PATHWAYS

NZ Certificate in Salon Skills (L2), NZ Certificate in Makeup and Skin Care (L3), NZ Certificate in Hairdressing (L3), NZ Certificate in Commercial Barbering (L4)

FUTURE CAREERS

Hairdressing apprenticeship, Barbering apprenticeship, Beauty apprenticeship

	UNIT STD	LEVEL	CREDITS
21935	Maintain order and supplies in a hairdressing or barbering salon environment	2	5
21936	Protect the client for hairdressing services in a salon environment*	2	1
21940	Demonstrate knowledge of workplace requirements for employment in a salon*	2	5
25439	Demonstrate knowledge of sustainability concepts for a salon*	2	2
28026	Present a personal fashion image for work in a hairdressing salon environment*	2	3
28025	Demonstrate knowledge of the client journey in a salon*	2	2
28027	Demonstrate knowledge of undertaking an observation of technical skills in a salon*	2	3
TOTAL			21



HAIR TO TRAIN

Donna Waterson
donna@hairtotrain.co.nz
027 531 6606



HAIRDRESSER/BARBER FOUNDATION PROGRAMME CONTINUED

TERM 3 : BARBERING

Barbering has made a huge comeback in NZ. New trends in men's hairstyling and grooming have made barbering an important aspect for men's fashion worldwide.

	UNIT STD	LEVEL	CREDITS
19805	Blow dry hair using barbering techniques	2	5
19808	Select and maintain barbering tools and equipment	3	4
10645	Describe the development of barbering	3	4
TOTAL			13

TERM 3 : HAIRDRESSING

Hairdressing allows you to express your creativity, make people feel beautiful and gives you flexible and diverse employment opportunities.

	UNIT STD	LEVEL	CREDITS
33199	Demonstrate knowledge of and apply shampoo and treatments to the hair and scalp	3	6
33218	Demonstrate knowledge of hair trends of the 20th century	2	4
25790	Select maintain and demonstrate safe handling of hairdressing equipment and handheld tools	3	4
TOTAL			14



HAIR TO TRAIN

Donna Waterson
donna@hairtotrain.co.nz
027 531 6606



HAIR, RETAIL AND BEAUTY L2

CRAFTING CONFIDENCE & STYLE

Start your career journey with a comprehensive introduction to hair, beauty, and retail industries. This course combines practical hands-on learning with essential skills in customer service and product knowledge.

You'll gain confidence working with clients, develop core techniques in hair and beauty care, and understand the retail environment — all while building a strong foundation for further study or work in these creative and dynamic fields.

KEY DETAILS

Course delivery	Terms 1-3, 1 day per week
Location	ROT, TGA, WHK
NCEA level	2

FUTURE PATHWAYS

NZ Certificate in Beauty Therapy (L4), NZ Certificate in Hairdressing (Salon Support) (L3), NZ Certificate in Commercial Barbering (L4)

FUTURE CAREERS

Entrepreneur, Beauty Therapist, Hairdresser, Makeup artist, Cosmetic Product Company Representative, Salon Manager, Spa Therapist

	UNIT STD	LEVEL	CREDITS
28295	Demonstrate knowledge of serving customers in a retail environment	2	5
21941	Prepare hair for hairdressing service under supervision	2	2
25077	Section and comb hair	2	2
28026	Present a personal fashion image for work in a hairdressing salon environment	2	3
27640	Demonstrate knowledge of current fashion trends and history related to beauty therapy	2	3
27641	Describe the relevance of anatomy and physiology knowledge to beauty therapy practice	2	3
TOTAL			18

**Toi Ohomai course details and locations may change. Please contact careers advisers for the most up to date information.*

BARBERING L2

TOOLS OF THE TRADE. SKILLS FOR LIFE

Step into the dynamic world of barbering, where creativity meets precision. This course introduces you to the culture of barbering, focusing on practical skills with tools of the trade, and delivering excellent customer service in a retail barbering environment.

While you'll cover essential theory, the majority of your learning will be hands-on, giving you real-world experience and confidence to start your journey in this high-demand, creative industry.

KEY DETAILS

Course delivery Terms 1-3, 1 day per week

Location ROT, TGA, WHK

NCEA level 2

FUTURE PATHWAYS

NZ Certificate in Salon Skills (L2), NZ Certificate in Makeup and Skin Care (L3), NZ Certificate in Hairdressing (L3), NZ Certificate in Commercial Barbering (L4)

FUTURE CAREERS

Hairdressing apprenticeship, Barbering apprenticeship, Beauty apprenticeship

	UNIT STD	LEVEL	CREDITS
19808	Select and maintain barbering tools and equipment	2	4
19805	Blow dry hair using barbering techniques	2	5
2886	Design and shape beards and moustaches	2	7
10645	Describe the development of barbering	2	3
TOTAL			19

**Toi Ohomai course details and locations may change. Please contact careers advisers for the most up to date information.*



MAKEUP & SKIN CARE NZ CERTIFICATE L3

Explore the world of professional makeup and skincare through hands-on experience and real-world skills. You'll learn how to assess skin types, apply a variety of makeup looks—from everyday wear to high-impact event styles—and develop key customer service and retail techniques.

Build your confidence while working with classmates as models, and create a portfolio that showcases your growing expertise. Whether you're interested in fashion, media, or working with people, this course sets you up with a strong foundation in practical, people-facing skills.

KEY DETAILS

Course delivery	Terms 1-3, 2 days per week
Location	ROT, TGA, WHK
NCEA level	3

FUTURE PATHWAYS

NZ Certificate in Beauty Therapy (L4), NZ Certificate in Hairdressing (Salon Support) (L3), NZ Certificate in Commercial Barbering (L4)

FUTURE CAREERS

Entrepreneur, Beauty Therapist, Hairdresser, Makeup artist, Cosmetic Product Company Representative, Salon Manager, Spa Therapist

	UNIT STD	LEVEL	CREDITS
21938	Converse and interact with clients and operators in a salon environment	3	3
28845	Demonstrate safe and professional practice in the salon environment	3	3
28843	Demonstrate knowledge of personal health and hygiene, and self-styling, for working in a salon	3	2
27644	Demonstrate knowledge of makeup and design theory	3	4
28946	Demonstrate knowledge of tools, equipment and safe operating procedures used in makeup and skin care services	3	4
27645	Demonstrate knowledge of the structure and functions of the face, and of facial skin types and conditions	3	6
27646	Perform skin care services for the face in preparation for makeup application	3	10
27647	Perform makeup services	3	10
14139	Demonstrate knowledge of, select, and recommend cosmetics and toiletries	3	8
25437	Demonstrate and apply knowledge of money matters and personal responsibility in the salon environment	3	5
27648	Demonstrate knowledge of promotional activities within a makeup and skin care workplace	3	7
TOTAL			62

*Toi Ohomai course details and locations may change. Please contact careers advisers for the most up to date information.



CAFÉ & CATERING L2

SERVE IT UP: CAFÉ & CATERING SKILLS FOR THE REAL WORLD

Step into the fast-paced world of cafés and hospitality with this hands-on course designed to build practical, industry-ready skills. Students will learn everything from preparing fresh cabinet food like sandwiches, salads, and fruit displays, to mastering knife-handling techniques and maintaining food-safe environments.

The course also offers professional barista training, including espresso and plunger coffee, tea service, and running real pop-up café events throughout the year – giving students the chance to apply their learning in a real customer-facing environment.

Whether you're keen on a career in hospitality or just want to sharpen your kitchen and service skills, this course offers a taste of everything you'll need to thrive in the café and catering industry.

	UNIT STD	LEVEL	CREDITS
167	Food Safety	2	4
13280	Fruit & veg	2	2
13281	Sandwiches	2	2
13283	Salads	2	2
13284	Clean food production areas	2	2
13285	Handle and Maintain Knives	2	2
17285	Commercial Espresso Beverages	2	4
17286	Pressed Coffee	2	2
22428	Tea Service	2	2
TOTAL			28

KEY DETAILS

Course delivery Terms 1-3, 1 day per week

Location WHK

NCEA level 2

FUTURE PATHWAYS

L3 school courses, L3 Futures Academy courses, L3 Hospitality and Cookery courses at Toi Ohomai, or other tertiary providers

FUTURE CAREERS

Cafes, tourism partners, table service, basic food handling in a commercial setting. There is significant shortage of skilled and/or qualified café workers in the region



TRIDENT TRADES TRAINING

Julie Ball

ballj@trident.school.nz

07 308 8159



NZ CERTIFICATE IN COOKERY L3

DEVELOP SKILLS AS A JUNIOR CHEF!

This practical Level 3 course focuses on cookery and culinary arts, where you'll prepare and present a range of hot, cold, savoury, and sweet dishes in fully equipped commercial kitchens. Gain hands-on experience by working in real student cafés and restaurants on campus, developing the technical skills and confidence needed for a career in the hospitality industry.

Designed to prepare you for junior chef positions, this course equips you with essential knowledge and practices to produce quality dishes while meeting professional standards. Graduates receive a nationally recognised qualification that supports employment and further study opportunities across the culinary and hospitality sectors.

KEY DETAILS

Course delivery	Terms 1-3, 2 days per week
Location	ROT, TGA
NCEA level	3

FUTURE PATHWAYS

NZ Certificate in Cookery (L5), NZ Certificate in Baking (L5), NZ Certificate in Food and Beverage Service (L4), NZ Diploma in Hospitality Management

FUTURE CAREERS

Chef, Baker, Barista, Barman, Caterer, Waiter/ Waitress

	UNIT STD	LEVEL	CREDITS
13314	Prepare and cook egg dishes in a commercial kitchen	3	4
27955	Apply food safety practices in a food-related business	3	5
13293	Prepare and cook basic vegetable dishes in a commercial kitchen	3	6
27929	Apply standard operating procedures and the code of conduct to a work role in a service delivery workplace	3	5
13316	Prepare and cook basic pasta dishes in a commercial kitchen	3	3
13315	Prepare, cook and present rice and farinaceous dishes in a commercial kitchen	3	6
27927	Apply health, safety and security practices to a work role in a service delivery workplace	3	5
13322	Prepare and cook basic pastry dishes in a commercial kitchen	3	4
13310	Prepare and produce hot and cold dessert items in a commercial kitchen	3	5
27928	Interact with other staff and managers, and customers to provide service delivery outcomes	3	5
13288	Prepare and cook basic meat dishes in a commercial kitchen	3	8
13304	Prepare and cook basic fish dishes in a commercial kitchen	3	4
TOTAL			60

**Toi Ohomai course details and locations may change. Please contact careers advisers for the most up to date information.*



HOSPITALITY L2

PRACTICAL SKILLS FOR A CAREER IN HOSPO

This Level 2 hospitality course offers you the chance to develop key skills needed to succeed in the fast-paced hospitality industry. Learn how to craft the perfect flat white while discovering the journey of coffee from bean to cup. Gain essential knowledge in food preparation, including baking, making sandwiches, and preparing salads.

Alongside practical cooking and coffee-making skills, you will develop important customer service techniques and teamwork abilities by serving guests at real campus events.

KEY DETAILS

Course delivery Terms 1-3, 1 day per week

Location ROT, TGA

NCEA level 2

FUTURE PATHWAYS

Hospitality, Café Service & Barista (L3)

FUTURE CAREERS

Chef, Baker, Barista, Barman, Caterer, Waiter/ Waitress, Guest Relations, Event Planner, Restaurant/Cafe Manager

	UNIT STD	LEVEL	CREDITS
62	Maintain personal presentation and a positive attitude in a workplace involving customer contact	2	3
9677	Communicate in a team which has an objective	2	3
57	Provide customer service	2	2
17285	Demonstrate knowledge of commercial espresso coffee equipment and prepare espresso beverages under supervision	2	4
13272	Cook food items by baking	2	2
13281	Prepare and present basic sandwiches for service	2	2
13283	Prepare and present salads for service	2	2
21059	Demonstrate knowledge of knife care, use, storage, and carrying, for the hospitality industry	2	2
TOTAL			20

**Toi Ohomai course details and locations may change. Please contact careers advisers for the most up to date information.*



NZ CERTIFICATE IN FOOD AND BEVERAGE _{L3}

LOADS OF HANDS-ON EXPERIENCE PRACTICING YOUR SKILLS

This practical course gives students hands-on experience in hospitality, café service, and barista skills, preparing them for real-world roles in the food and beverage industry. Students will learn how to operate equipment safely and efficiently, follow quality systems, and deliver great customer service in café-style settings. Students enrolled in the 2-day-a-week option will complete the full New Zealand Certificate in Food or Beverage Processing (Level 2) – NZ2104, a nationally recognised qualification for entry-level roles in food and beverage production.

A 1-day-a-week option is also available, which provides a strong introduction to the industry and contributes toward the certificate.

KEY DETAILS

Course delivery	Terms 1-3, 2 days per week
Location	ROT, TGA
NCEA level	3

FUTURE PATHWAYS

NZ Certificate in Cookery (L5), NZ Certificate in Baking (L5), NZ Certificate in Food and Beverage Service (L4), NZ Diploma in Hospitality Management

FUTURE CAREERS

Chef, Baker, Barista, Barman, Caterer, Waiter/ Waitress, Guest Relations, Event Planner, Restaurant/Cafe Manager

	UNIT STD	LEVEL	CREDITS
21853	Provide hospitality sales and service opportunities to customers.	3	5
27955	Apply food safety practices in a food related establishment.	3	5
27927	Apply health, safety and security practices to a work role in a service delivery workplace.	3	5
27928	Interact with other staff and managers, and customers to provide service delivery outcomes.	3	5
*14441	Provide café counter service in a hospitality establishment	3	5
*17284	Demonstrate knowledge of coffee origin and production	3	3
*17288	Prepare and present espresso beverages for service	3	5
*27940	Provide café table service in a hospitality establishment	3	5
TOTAL			38

* 1 day course option Unit Standards offered.

*Toi Ohomai course details and locations may change. Please contact careers advisers for the most up to date information.



SPORT, EXERCISE & COACHING L2-3

TRAIN. COACH. LEAD.

This course provides a strong introduction to the key principles of sport, exercise, and physical fitness. Students will learn about how the body moves and responds to exercise, including basic anatomy, physiology, and the importance of safe training and stretching techniques. Practical skills will be developed to help students apply these principles in real-life fitness and sporting environments.

Alongside this, the course explores the role of a coach — teaching students how to support beginner athletes, lead skill development sessions, and work effectively with rangatahi in a positive and encouraging way.

With a combination of theory and hands-on learning, this course helps students build confidence and understanding in sport and fitness, preparing them for further study or entry-level roles in health, fitness, or youth development.

KEY DETAILS

Course delivery	Terms 1-3, 1 day per week
Location	WHK
NCEA level	2-3

FUTURE PATHWAYS

Certificate of Tākaro, Sport and Exercise L4 Te Whare Wananga o Aotearoa, Cert 4 Fitness – Toi-ohomai

FUTURE CAREERS

Fitness instructor/personal trainer, strength and conditioning coach, sports coach, sports development officer, rehabilitation specialist, physiotherapist, physical education teacher

	UNIT STD	LEVEL	CREDITS
91330	Perform a physical activity in an applied setting	2	4
91334	Consistently demonstrate social responsibility through applying a social responsibility model in physical activity	2	3
30932	Demonstrate knowledge of pre-designed exercise programmes, exercise principles, components and adherence	3	10
30933	Demonstrate exercise and stretching techniques	3	5
31675	Demonstrate knowledge of the role and responsibilities of a coach, and of coaching beginner-level sport participants	3	7
31677	Coach beginner-level participants through skill development activities for a selected sport	3	4
30447	Demonstrate basic knowledge of anatomical structures and physiological responses to exercise	3	5
TOTAL			38



TRIDENT TRADES TRAINING

Julie Ball
ballj@trident.school.nz
07 308 8159

LEADERSHIP SKILLS IN SPORT & OUTDOOR RECREATION ^{L3}

PASSIONATE ABOUT HELPING OTHERS?

If you're passionate about helping others thrive through movement, teamwork, and the outdoors, this course is the perfect launchpad. Through a range of sport and outdoor recreation activities like kayaking, rafting, rock climbing and coaching, you'll build leadership skills, confidence, and the ability to support others' wellbeing.

This hands-on course is designed for students interested in careers in the sport, fitness, and tourism industries — some of Aotearoa's fastest-growing sectors. You'll develop personal and social capability while gaining real-world experience that supports future study or employment in coaching, outdoor education, or active recreation.

KEY DETAILS

Course delivery	Terms 1-3, 1 day per week
Location	ROT
NCEA level	3

FUTURE PATHWAYS

Cert4Fitness (L4), NZ Certificate in Outdoor Education (L4) Therapeutic and Sports Massage (L5), NZ Diploma in Sport, Recreation and Exercise (L5), a pathway to a Bachelor Degree

FUTURE CAREERS

Exercise Consultant, Community Exercise Instructor, Personal Trainer, Outdoor Education Instructor, Event Supervisor, Health Educator, Recreation Programme Coordinator, Sport Development Officer, Sport Coordinator, Sport Coach, Applied Sports Scientist

	UNIT STD	LEVEL	CREDITS
29849	Demonstrate knowledge of professional practice in a recreation workplace	3	5
21414	Plan and run a recreation activity	3	4
30935	Develop and implement an exercise plan for personal physical fitness	3	5
24663	Demonstrate leadership while participating in an adventure-based learning programme	3	3
TOTAL			22

**Toi Ohomai course details and locations may change. Please contact careers advisers for the most up to date information.*



TOURISM, TRAVEL & EVENTS L3

CREATING UNFORGETTABLE EXPERIENCES

Are you ready for a career full of excitement and opportunity in a fast-growing industry? Tourism needs enthusiastic people with the right skills to help visitors enjoy unique and memorable experiences while supporting regional growth.

Whether it's guiding guests on thrilling adventures or sharing the stories of our culture, this course gives you insight into both the national and international tourism industries. With industry visits, field trips, and plenty of hands-on learning, you'll develop the practical skills and knowledge to thrive in this dynamic field.

KEY DETAILS

Course delivery	Terms 1–3, 1 day per week
Location	TGA, ROT
NCEA level	3

FUTURE PATHWAYS

NZ Diploma in Tourism and Travel, NZ Diploma in Hospitality Management

FUTURE CAREERS

Guest Relations, Event Planner, Restaurant/Cafe

	UNIT STD	LEVEL	CREDITS
18228	Demonstrate knowledge of specific New Zealand regions as tourist destinations	3	8
4251	Plan a career pathway	3	3
31071	Identify and explain the cultural significance of natural and man-made attractions in tourism Māori	3	6
18226	Apply cross-cultural communication for the tourism industry	3	3
TOTAL			20

**Toi Ohomai course details and locations may change. Please contact careers advisers for the most up to date information.*

MĀORI TOURISM | TE ARA TĀPOI L3

WHERE CULTURE MEETS TOURISM

This course will create future pathways for mokopuna to build Māori tourism capability within Tūwharetoa while maintaining the mana motuhake of hapū, iwi, and the protection of the taiao. With a focus on culture, language, and values, learners develop the skills to share meaningful stories and deliver authentic, engaging visitor experiences.

At the heart of the course is empowering Tūwharetoa rangatahi (students) to tell their own stories—strengthening identity while building skills for a future in tourism.

Graduates will be well-equipped to take on roles as cultural storytellers and guides, contributing to a more authentic and connected Aotearoa tourism industry.

Please note: This course is delivered in Te Reo Māori, and the kura/training partner follows the Maramataka Māori. The course will begin in Wāhanga 3, Term 1 2026 and run through to Wāhanga 2, Term 4 2027.

KEY DETAILS

Course delivery Wāhanga 3 2026 to Wāhanga 2 2027, 1 week per term

Location Te Kura o Hirangi

NCEA level 3

FUTURE PATHWAYS

NZ Diploma in Tourism and Travel (L5),
Certificate in Tour Guiding (L4)

FUTURE CAREERS

Māori Tourism Tour Guide, Māori Tourism Operator, Hospitality, Māori Performing Arts, Story Telling

	UNIT STD	LEVEL	CREDITS
17385	Compare and contrast cultural practices in tourism and the impact of tourism on Māori	3	5
17391	Demonstrate knowledge of key forms of Māori communication, and the significance of Māori identity in tourism Māori	3	5
17578	Explain the value and benefits of whānau in tourism Māori	3	4
17784	Discuss, examine and recite appropriate karakia in tourism Māori	3	5
17786	Explain tikanga in tourism Māori	3	5
31070	Explain the importance of Māori place names, and use reo Māori greetings and farewells in tourism	3	4
40123	Perform as a storyteller for visitors (2026)	3	5
TOTAL			33



TE KURA O HIRANGI

Dorothy Dempsey
027 277 8307



TURN YOUR IMAGINATION INTO A CAREER

WHAT IS THE CREATIVE INDUSTRIES PATHWAY?

This pathway covers careers where creativity, communication, and design take the lead. It blends art and technology, innovation and culture, and expression with strategy.

THIS PATHWAY INCLUDES SECTORS LIKE:

- Graphic Design & Visual Arts
- Film, TV, Photography & Animation
- Music, Performing Arts & Theatre
- Fashion & Textile Design
- Digital Media, Web & Game Design
- Marketing, Advertising & Communications

IS THIS THE PATHWAY FOR YOU?

- Do I enjoy creating, designing, or performing?
- Am I a good communicator or storyteller?
- Do I enjoy working on projects and thinking outside the box?
- Do I want to inspire, inform, or entertain others?
- Am I curious about how media, design, or tech work together?

If you're passionate about expressing ideas and making an impact, the Creative Industries pathway could be your stage, your canvas, or your code.

WHAT JOBS COULD I DO?



Entry-Level Jobs

Junior Graphic Designer, Social Media Assistant, Retail Visual Merchandiser, Music or Art Studio Assistant, Junior Copywriter or Content Creator

With Training or Experience,

Web or App Designer, Videographer or Animator, Event or Stage Technician, Photographer or Audio Engineer, Fashion Assistant or Stylist,

Specialist/Professional Roles

Creative Director, Film or TV Producer, UX Designer, Marketing Strategist, Communications Manager

WHAT CAN I EARN?

- Entry-level creatives may start at **\$48,000 – \$55,000/year**.
- With experience and a portfolio, mid-level roles can earn **\$65,000 – \$90,000**.
- Senior creatives and specialists may earn **\$100,000+**, particularly in media, UX, and digital marketing roles.

Many creative careers also offer **freelance or self-employment options**.

WHY THIS PATHWAY MATTERS

Creative industries shape how we see the world – from movies and websites to branding and fashion. They solve problems, move people, and drive culture and innovation.

In a digital world, creativity is a career superpower – and New Zealand's creative economy is growing fast.



FASHION & DESIGN L2

CREATIVITY IN ACTION

Discover where art meets design in this dynamic, hands-on programme. You'll develop a wide range of skills essential for creative industries by working alongside New Zealand's leading artists, fashion designers, and industry professionals.

Learning takes place in collaborative, inspiring spaces that encourage innovation and teamwork. Throughout the course, you'll create real-world projects that bring your creative ideas to life and prepare you for future pathways in fashion, design, and the arts.

KEY DETAILS

Course delivery Terms 1-3, 1 day per week

Location TGA

NCEA level 2

FUTURE PATHWAYS

Fashion, Retail & Merchandising (L3)

FUTURE CAREERS

Artist, designer, marketing, entrepreneur, business owner, retail sales

	UNIT STD	LEVEL	CREDITS
91350	Make advanced adaptations to a pattern to change the structural and style features of a design	2	4
25240	Demonstrate knowledge of the factors that influence the cost of a garment	2	3
16837	Prepare for and produce fashion drawings	2	3
91340	Use the characteristics of a design movement or era to inform own design ideas	2	3
6697	Prepare for and create wearable art	2	6
TOTAL			19

**Toi Ohomai course details and locations may change. Please contact careers advisers for the most up to date information.*



MAORI CARVING / WHAKAIRO L2 COHORT

EXPLORE THE ART AND PRACTICE OF WHAKAIRO

This course offers taura an introduction to Toi Whakairo (Māori carving), focusing on the foundational skills, design elements, and drawing techniques used in traditional and contemporary whakairo. Students will explore cultural narratives, develop their own creative designs, and apply practical skills to bring their whakairo concepts to life.

Delivery options include noho-style block courses or 1–2 days per week, depending on the needs of each school or kura. Courses are scheduled in direct consultation with each school.

KEY DETAILS

Course delivery Terms 1–3, 1–2 days per week; or block/noho delivery

Location WHK, Kawerau, Murupara & other Bay of Plenty schools / Kura Kaupapa Māori

NCEA level 2

FUTURE PATHWAYS

Toi Maruata Certificate in Māori & Indigenous Art Carving L3, Kāwai Raupapa Certificate in Māori & Indigenous Art Carving L4, Toi Paemātua Diploma in Māori & Indigenous Art Carving L5, Maunga Kura Toi Bachelor of Māori Art Carving L7

FUTURE CAREERS

Practicing artist, work in community arts or support whānau, iwi and marae projects. Gallery and exhibition work – exhibition design, curatorial work, front of house. Teaching and arts facilitation. Community-based practitioner – work with whānau, hapū, iwi and hāpori

	UNIT STD	LEVEL	CREDITS
2580	Explain design elements used to generate Toi Māori design,	2	4
2594	Employ drawing techniques to create Māori art	2	4
23010	Generate, develop and refine visual ideas in whakairo	2	6
23013	Create whakairo	3	6
TOTAL			20



Te Wānanga
o Aotearoa

TE WĀNANGA O AOTEAROA

Marg Apiti
Marg.Apiti@twoa.ac.nz
027 296 6284

WĀNANGA NOHO L2-3

EXPLORING TE AO MĀORI THROUGH WĀNANGA

This course offers a unique opportunity to deepen understanding of te ao Māori through immersive wānanga grounded in Ngāti Awa tikanga and mātauranga.

Students take part in three week-long noho throughout the year, engaging in practical activities such as preparing and serving kai, participating in karakia and pōhiri, learning tikanga and kawa, producing a hāngī, and exploring mau rākau.

As they participate, students earn NZQA unit standards and develop both cultural confidence and transferable skills for use across a wide range of future pathways in Aotearoa.

KEY DETAILS

Course delivery	Terms 1-3, 3 week long noho
Location	WHK
NCEA level	2-3

FUTURE PATHWAYS

This wānanga will give students the employability skills in all aspects that encompass Te Ao Māori, both within the rohe and across Aotearoa. Being confident to uphold Māori tikanga process and protocol is integral to success as Māori

FUTURE CAREERS

Practicing artist, work in community arts or support whānau, iwi and marae projects. Gallery and exhibition work – exhibition design, curatorial work, front of house. Teaching and arts facilitation. Community-based practitioner – work with whānau, hapū, iwi and hāpori

	UNIT STD	LEVEL	CREDITS
31507	Participate in the recitation of karakia at a hui	2	3
31287	Prepare and provide kai service, as part of a team and under supervision, for manuhiri	2	8
27108	Describe the protocols and roles associated with Pohiri in accordance with tikanga and/or kawa	2	2
27548	Perform tetahi momo rakau whawhai	3	10
30540	Plan and prepare and produce a hangi as part of a team in accordance with tikanga and kawa	3	5
TOTAL			28



TRIDENT TRADES TRAINING

Julie Ball
ballj@trident.school.nz
07 308 8159



MAKE A DIFFERENCE WHERE IT MATTERS

WHAT IS THE SOCIAL & COMMUNITY SERVICES PATHWAY?

This pathway is all about helping others, supporting wellbeing, and building stronger, healthier communities. It includes essential roles that touch people's lives – from social services and education to public safety and health.

THIS PATHWAY INCLUDES SECTORS LIKE:

- Health and Wellbeing
- Education and Childcare
- Law Enforcement and Defence
- Youth Work and Social Services
- Emergency and Protective Services

IS THIS THE PATHWAY FOR YOU?

- Do I enjoy helping others and making people feel safe or supported?
- Am I a good listener, patient, and empathetic?
- Do I want to protect and care for my community?
- Am I interested in health, teaching, or social justice?
- Can I stay calm under pressure and solve problems with care?

If you've ever thought, "I want to make a difference," then the Social & Community Services pathway might be right for you.

WHAT JOBS COULD I DO?



Entry-Level Jobs

Teacher Aide, Healthcare Assistant, Childcare Worker, Security Guard, Community Support Worker, Receptionist (clinic or school)

With Training or Experience

Police Officer, Firefighter, Corrections Officer, Youth Worker, Ambulance Officer, Defence Force Member

Specialist/Professional Roles

Registered Nurse, Social Worker, Paramedic, Early Childhood Teacher, Counsellor, Occupational Therapist

WHAT CAN I EARN?

- Many roles start at **\$48,000 – \$55,000/year** (e.g. health assistants, security, childcare).
- With qualifications and experience, earnings increase to **\$65,000 – \$90,000**.
- Senior professionals (nurses, social workers, paramedics) often earn **\$90,000 – \$110,000+**.

The demand for qualified, caring workers is strong — especially in health, education, and emergency response.

THE FUTURE OF CARE AND COMMUNITY

These careers are **essential** and will always be needed — especially as our population grows and ages. Digital tools are changing how services are delivered, but human connection remains at the heart of this work.

People in these careers often say the biggest reward is knowing they've **made a real impact** in someone's life.

WHĀNAU ORA | PŌKAITAHI L4

SUPPORTING WHĀNAU THROUGH MĀORI PRINCIPLES

This course prepares students to support the wellbeing of others across community, residential, and home-based settings, using whānau-centred approaches and kaupapa Māori principles.

Students will develop the knowledge and hands-on skills to assist in health and social services under supervision, with a focus on empowering whānau to lead their own wellbeing journeys. Practical learning is supported through placements with local providers, including aged care facilities, pharmacists, Whānau Ora organisations, rongoā Māori practitioners, and community health services.

Ideal for those who want to make a positive impact and explore pathways in hauora (health), care, and social development.

KEY DETAILS

Course delivery Terms 1-3, 2 days per week; or 4 × 1 week noho intensives

Location ROT

NCEA level 4

FUTURE PATHWAYS

Te Pou Tautoko i Te Ora: NZ Diploma in Social Services (L5), NZ Diploma in Whānau Ora (L6), Bachelor of Applied Social Work or Health Sciences, Pre-training for Nursing, Social Work, Community Development, Degree in Whānau Ora

FUTURE CAREERS

Kaimahi Whānau Ora, Community Support Worker, Health and Wellbeing Worker, Youth Worker, Aged Care and Residential Care Support Roles, Kaupapa Māori Social Services roles

	UNIT STD	LEVEL	CREDITS
15309	Demonstrate knowledge of hauora Māori models and their application in a hauora context	4	3
15312	Explain implications of legislation on hauora Māori	3	6
15314	Explain and apply tikanga when communicating with, and caring for, whānau in a hauora context	4	3
15316	Explain, apply and maintain personal and professional boundaries when working with whānau	4	3
31176	Build effective relationships to develop and implement communication strategies to achieve whānau ora	4	10
31177	Describe the role of a whānau ora practitioner, te pono me te tika and apply in practice	4	10
31178	Explain a whānau-centred approach plan; develop, implement and monitor a whānau-centred approach plan for whānau ora	4	10
31179	Describe the significance of a whānau ora database	4	5
31181	Describe, develop and implement, and evaluate a whānau ora project that encompasses rangatiratanga	4	10
TOTAL			60



MAKE A DIFFERENCE WHERE IT MATTERS

WHAT IS THE CONSTRUCTION & INFRASTRUCTURE PATHWAY?

This pathway includes the industries that build, repair, and maintain the places we live, work, and move through — from homes and schools to roads and power lines.

THIS PATHWAY INCLUDES SECTORS LIKE:

- Carpentry and Building
- Plumbing and Drainlaying
- Electrical and Civil Works
- Infrastructure and Roading
- Painting, Plastering, Roofing, and Tiling

IS THIS THE PATHWAY FOR YOU?

- Do I like working with tools and materials?
- Am I reliable, practical, and good at following instructions?
- Do I enjoy physical activity and working outdoors?
- Can I work safely and solve problems as they come up?
- Do I like the idea of seeing real results at the end of the day?

If you answered yes, a career in construction or infrastructure might be the right foundation for your future.

WHAT JOBS COULD I DO?



Entry-Level Jobs

Construction Labourer, Roofing or Scaffolding Assistant, General Maintenance Worker, Traffic Control Assistant, Builder's Apprentice

With Training or Experience

Qualified Carpenter, Apprentice Electrician, Civil Works Operator, Apprentice Plumber or Drainlayer, Painting & Decorating Technician

Specialist/Professional Roles

Site Manager, Project Manager, Quantity Surveyor, Building Inspector, Infrastructure Engineer

WHAT CAN I EARN?

- Entry-level jobs start at **\$47,000 – \$55,000**/year.
- Apprentices earn while they learn and move up to **\$70,000 – \$90,000** once qualified.
- Specialist and supervisory roles can earn **\$100,000+**, especially in civil and infrastructure projects.

WHY THIS PATHWAY MATTERS

People will always need homes, schools, roads, and hospitals. You could be part of shaping communities, solving housing problems, and building safer, smarter spaces.

And with infrastructure expanding and technology evolving, careers in this space offer long-term growth and plenty of opportunity.



CONSTRUCTION L2

A SOLID START TO A CAREER IN CONSTRUCTION

This course gives students the chance to learn by doing. They'll start with a garden furniture build before progressing to larger timber-framed structures. Along the way, students will learn how to safely use hand and power tools, read and interpret building plans, and carry out quality checks on their work. With a strong focus on practical experience and project completion, this course is perfect for those who enjoy physical work, solving problems, and creating something they can be proud of.

KEY DETAILS

Course delivery	Terms 1-3, 1 day per week
Location	ROT, TPO, TGA, TOK, WHK
NCEA level	2

FUTURE PATHWAYS

Certificates L1-3, NZ Certificates L3-4, Diploma's L5-7, Apprenticeships in Construction and Automotive, Further university studies – such as bachelor's degrees in business, computer science

FUTURE CAREERS

Construction Labourer, Roofing or Scaffolding Assistant, General Maintenance Worker, Traffic Control Assistant, Builder's Apprentice

	UNIT STD	LEVEL	CREDITS
Building Construction 1			
12932	Garden Furniture	2	8
12927	Demonstrate knowledge of, select, maintain, and use hand tools for BCATS projects	2	6
Building Construction 2			
12936	Construct a non-consent timber framed utility building as a BCATS project	2	8
24350	Identify, select, maintain, and use portable power tools for BCATS projects	2	6
24358	Plan and monitor the construction of a BCATS project, and quality check the product	2	3
22607	Read and interpret plans, working drawings and specifications for BCATS projects	2	3
OR Building Construction 3			
31812	Complete a BCATS project	2	6
24350	Identify, select, maintain, and use portable power tools for BCATS projects	2	6
24358	Plan and monitor the construction of a BCATS project, and quality check the product	2	3
22607	Read and interpret plans, working drawings and specifications for BCATS projects	2	3
TOTAL			28

*Toi Ohomai course details and locations may change. Please contact careers advisers for the most up to date information.



CARPENTRY & JOINERY L3

YOUR FUTURE IN CARPENTRY STARTS HERE

This advanced course offers a strong foundation in carpentry and joinery while you're still at school, giving you a head start toward a career in the construction industry. You'll develop valuable, work-ready skills through hands-on learning, working on a Stage 3 BCATS project that reflects real-world expectations in the trades.

Throughout the course, students will gain experience using a wide range of tools and materials, apply safe workplace practices, and collaborate in a team environment. This is an ideal next step for those looking to transition into the New Zealand Certificate in Construction or begin a construction apprenticeship.

KEY DETAILS

Course delivery Terms 1–3, 1 day per week

Location ROT, TPO, TGA, TOK, WHK

NCEA level 3

FUTURE PATHWAYS

NZ Certificate in Construction Trade Skills (L3), NZ Certificate in Carpentry (L4), NZ Diploma in Construction (Construction Management) (L6), NZ Diploma in Construction (Quantity Surveying) (L6)

FUTURE CAREERS

Apprentice within the Construction Industry, Qualified Carpenter, Supervisory and Management roles within the Construction Industry

	UNIT STD	LEVEL	CREDITS
29684	Undertake a Stage 3 BCATS project	3	12
29682	Select, use, and maintain tools, equipment and machinery for a Stage 3 BCATS project	3	4
29678	Demonstrate knowledge of, select, and use materials for a Stage 3 BCATS project	3	4
29680	Communicate and work collaboratively in a Stage 3 BCATS project	3	5
TOTAL			25

**Toi Ohomai course details and locations may change. Please contact careers advisers for the most up to date information.*



ALLIED TRADES TRAINING L2-3

BUILD YOUR FUTURE WITH REAL-WORLD TRADE SKILLS

Get hands-on experience across a range of trades while helping renovate a house. Learn skills in plumbing, electrical, painting, flooring, kitchen design, working at heights, and more, guided by a master builder and industry professionals.

The course blends modern building practices, sustainability, and Ngāti Awatanga culture, with insights into local employment pathways and industry connections.

Offered in partnership with BoP House Removals, Galloway Builders, the local Master Builders Association, Te Rūnanga o Ngāti Awa, and Trident High School.

KEY DETAILS

Course delivery	Terms 1-3, 5 days per week (Trident High School students) / 3 days per week (local area students)
Location	WHK
NCEA level	2-3

FUTURE PATHWAYS

Any level 3 course at school, Building and Construction Level 3 at Toi Ohomai or other training institutions

FUTURE CAREERS

Hammerhands, builder, painter, roofer, gibbing installer, flooring installer, kitchen installer, allied trades labourer

	UNIT STD	LEVEL	CREDITS
*24354	Safety (BCATS)	2	4
*24360	Timber and Materials (BCATS)	2	5
*31511	DKO BCATS Industries (BCATS)	2	4
*12927	Hand Tools (BCATS)	2	6
*24350	Power Tools (BCATS)	2	6
*24351	Fixed Machinery (BCATS)	2	6
*12933	Concrete (BCATS)	2	6
*24358	Plan and Monitor (BCATS)	2	3
*24361	Maths (BCATS)	2	3
*24357	Communication	2	4
4261	Identify legal rights and obligations –motor vehicle ownership	2	3
12349	Time Management	2	3
7127	How to make a good purchase choice	2	3
1979	Describe employment agreements	2	3
12354	Renting accommodation in NZ	2	4
24871	Fill in Forms	3	2
10851	*Forklift Course	3	7
25045 23229	*Heights Course	3	8
17591	*Health & Safety Course	3	8
TOTAL			63

* Unit standards offered in 3 days per week course version.



TRIDENT TRADES TRAINING

Julie Ball
 ballj@trident.school.nz
 07 308 8159



BUILDING & CONSTRUCTION (COHORT) L2

Explore construction through a hands-on course grounded in tikanga Māori. Students gain practical skills in tool safety, teamwork, project planning, and building—all delivered either weekly (1 day/week for 30 weeks) or in noho-style blocks (4–5 days across the year), at school, kura, or marae.

200-Hour (20 Credits): Core construction skills in a BCATS environment, including safe tool use, communication, and workplace safety.

230-Hour (23 Credits): A deeper dive into construction with a full project build, covering materials, planning, quality control, and industry knowledge.

Courses are scheduled in collaboration with schools. Contact Te Wānanga o Aotearoa to find the best fit for your students.

KEY DETAILS

Course delivery Terms 1–3, 1 day per week; or noho-style

Location WHK, Kawerau, Murupara. Other BOP schools / Kura Kaupapa Māori (conditions apply)

NCEA level 2

FUTURE PATHWAYS

NZ Certificate in Construction Trade Skills (Carpentry) L3, BCITO Apprenticeship L4

FUTURE CAREERS

Building, Concreting and Bricklaying, Construction Sites, Exterior Joinery and Stairs, Joinery, Paving and Landscaping, Painting and Decorating, Roofing

200-HOUR PROGRAMME

	UNIT STD	LEVEL	CREDITS
12927	Identify, select, maintain, and use hand tools for BCATS projects	2	6
24350	Identify, select, maintain, and use portable power tools for BCATS projects	2	6
24354	Demonstrate knowledge and apply safe working practices in BCATS workplace	2	4
24357	Receive instructions and communicate information in relation to BCATS projects	2	4
TOTAL			20

230-HOUR PROGRAMME

	UNIT STD	LEVEL	CREDITS
12936	Construct a non-consent timber framed utility building as a BCATS project	2	8
24358	Plan and monitor the construction of a BCATS project, and quality check the product	2	3
24360	Demonstrate knowledge of timber and other construction materials used in BCATS projects	2	5
24361	Apply mathematical processes to BCATS projects	2	3
31511	Demonstrate knowledge of BCATS industries	2	4
TOTAL			23



Te Wānanga
o Aotearoa

TE WĀNANGA O AOTEAROA

Marg Apiti
Marg.Apiti@twoa.ac.nz
027 296 6284



CIVIL INFRASTRUCTURE (COHORT) L2

BUILD A FUTURE IN CIVIL INFRASTRUCTURE

This hands-on course introduces students to the civil infrastructure industry, building practical skills and foundational knowledge for future work in civil construction. Learners gain experience in safe work practices, machinery use, temporary traffic management, licensing awareness, and quality assurance.

Courses are delivered as noho-style block learning or 1–2 days per week, scheduled in consultation with each school or kura.

KEY DETAILS

Course delivery	Terms 1–3, 1–2 days per week; or Noho-style
Location	ROT, TPO, TGA, TOK, WHK
NCEA level	2

FUTURE PATHWAYS

Infrastructure Works L3, Plant Operations L3, Bitumen Surfacing Construction L4, Civil L4, Single Site Supervision L4, Surveying L4, Civil Engineering L4 and L5

FUTURE CAREERS

Roading, Construction Worker, Foreman, Civil Engineer, Trades worker

	UNIT STD	LEVEL	CREDITS
17327	Communicate with stakeholders on an infrastructure worksite	2	3
20868	Demonstrate knowledge of emergency situations, procedures, and responses on an infrastructure worksite	2	4
22283	Demonstrate knowledge of the New Zealand infrastructure works industry	2	3
26720	Describe health, safety, and environmental care at an infrastructure worksite	2	3
6475	Describe and complete work records for an infrastructure worksite	2	2
6477	Demonstrate knowledge of aggregates and mixes used on an infrastructure worksite	2	3
23285	Use and care for hand tools used on an infrastructure worksite	2	2
TOTAL			20



Te Wānanga
o Aotearoa

TE WĀNANGA O AOTEAROA

Marg Apiti
Marg.Apiti@twoa.ac.nz
027 296 6284



CARAVAN RESTORATION L2

TRADE SKILLS IN ACTION: CARAVAN RESTORATION PROJECT

The Restoration and Renovation Project is a hands-on introduction to the trades through the real-world challenge of reviving an old caravan. Students will gain practical experience across a range of sub-trades—carpentry, painting, electrical, and interior fit-out—while working as a team to complete a professional-standard build.

This project develops essential trade skills, encourages problem-solving, and builds confidence in using tools, materials, and techniques used in the industry. It's a unique opportunity to learn by doing—and to create something lasting and valuable for the school and wider community.

*Students from other schools can apply to this course, but student numbers are limited.

KEY DETAILS

Course delivery	3-day course
Location	Kawerau
NCEA level	2

FUTURE PATHWAYS

Any level 3 course at school or within the Futures Academy. Beyond school it could lead to a Trades apprenticeship in a range of industries

FUTURE CAREERS

Trade Industries: construction, carpenter, fabrication, welding, design

UNIT STD		LEVEL	CREDITS
91253 (Media)	Complete a developed media product from a design and plan using a range of conventions	2	6
16142	Describe the practices associated with a powhiri	2	2
8195	Test and select batteries used in electronic applications & select suitable chargers	2	4
25536	Operate a bandsaw to produce furniture components	2	3
18915	Use fixing hardware in furniture making	2	3
16230	Demonstrate knowledge of the use of adhesives in furniture making	2	2
17594	Demonstrate knowledge of hearing conversation in the workplace	2	3
18408	Demonstrate knowledge of fire and emergency warden duties in the workplace	2	3
19522	Undertake job safety analysis	2	3
30265	Apply Health and safety risk assessment to a job role	2	8
17586	Demonstrate knowledge of electrical safety in the workplace	2	4
23229	Use safety harness system when working at height	2	4
17600	Explain safe work practices for working at heights	2	3
TOTAL			48



BUILDING ACADEMY L3

DEVELOP REAL SKILLS TO SHAPE YOUR TRADES FUTURE

This hands-on course is your launchpad into the building industry. Based at Ōpōtiki College, you'll work on real construction projects by helping build re-locatable homes — gaining practical experience that sets you up for a career in the trades.

*This course may also be delivered at other EBoP school locations upon negotiation.

KEY DETAILS

Course delivery Terms 1-4, 5 days per week (in school) / 3 days a week (local school)

Location OPO

NCEA level 3

FUTURE PATHWAYS

BCITO Apprenticeship L4

FUTURE CAREERS

Building, Electrician, Plumbing, Scaffolding, GIB stopping, Painting and Decorating, Roofing

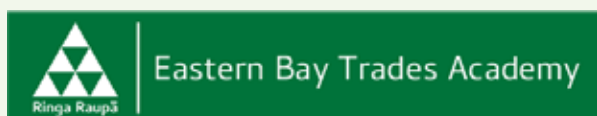
	UNIT STD	LEVEL	CREDITS
29684*	Undertake a Stage 3 BCATS project	3	12
29677*	Follow safe workplace practices, and contribute to a health and safety culture, in a BCATS environment	3	2
29678*	Demonstrate knowledge of, select, and use materials for a Stage 3 BCATS project	3	4

29679*	Develop and use BCATS project documentation for a Stage 3 BCATS project	3	8
29680*	Communicate and work collaboratively in a Stage 3 BCATS project	3	5
29681*	Measure and calculate for a Stage 3 BCATS project	3	3
29682*	Select, use, and maintain tools, equipment and machinery for a Stage 3 BCATS project	3	4
29683*	Incorporate other building, construction and allied trades into a Stage 3 BCATS project schedule	3	2
32462*	Use Carpentry tools under supervision	3	12
32443	Demonstrate knowledge of tools and equipment used for carpentry	3	9
12997	Demonstrate knowledge of working safely in construction	3	3
24362	Demonstrate knowledge of documentation, working drawings and specifications for building work	3	3
13002	Demonstrate knowledge of timber used in construction	3	2
24378	Make calculations for carpentry	3	4
TOTAL			73

* 3 days per week course unit standards offered.

EASTERN BAY TRADES ACADEMY

John Gilmour
 johng@opotikicol.school.nz
 07 315 7022





CONSTRUCTION ACADEMY L2-3

REAL SKILLS. REAL PROJECTS. REAL PATHWAYS.

This 30-week, hands-on programme offers students a strong foundation in the building and construction industry, combining three full days of on-site training each week with real-world work placements.

With over 60 credits available, including 40 BCITO construction standards, students will also gain valuable skills in workplace communication, health and safety, employment readiness, and working at heights. Training focuses on practical building skills, hand and power tool use, and site safety, all tailored to the needs of local learners.

The course is enriched by collaboration with Ngāti Awatanga, ensuring cultural connection and a learning environment that supports identity and diversity. Students graduate with industry-relevant experience and a clear pathway to apprenticeships, further training, or employment in the trades.

KEY DETAILS

Course delivery Terms 1-4, 5 days per week (WHS students) / 3 days a week (area school students)

Location WHK

NCEA level 2-3

FUTURE PATHWAYS

BCITO Apprenticeship, level 4, Building and Construction L4 at Toi Ohomai

FUTURE CAREERS

Building, Concreting and Bricklaying, Construction Sites, Exterior Joinery and Stairs, Joinery, Paving and Landscaping, Painting and Decorating, Roofing

UNIT STD	LEVEL	CREDITS
29677* Follow safe workplace practices, and contribute to a health and safety culture	3	2
29678* Demonstrate knowledge of, select, and use materials for a Stage 3 BCATS project	3	4
29679* Develop and use BCATS project documentation for a Stage 3 BCATS project	3	8
29680* Communicate and work collaboratively in a Stage 3 BCATS project	3	5
29681* Measure and calculate for a Stage 3 BCATS project	3	3
29682* Select, use, and maintain tools, equipment and machinery for a Stage 3 BCATS	3	4
29683* Incorporate other building, construction and allied trades into a Stage 3 BCATS	3	2
29684* Undertake a Stage 3 BCATS project	3	12
19522 Undertake job safety analysis	3	3
30265 Apply health and safety risk assessment to a job role	3	8
17586 Demonstrate knowledge of electrical safety in the workplace	3	4
17600 Explain safe work practices for working at heights	3	3
15757 Use, install and disestablish temporary proprietary height safety systems when working at heights	3	4
23229 Use safety harness system when working at heights	3	4
TOTAL		66

* 3 days per week course unit standards offered.



WHAKATĀNE HIGH SCHOOL

Jo-Anne Stuart
careers@whs.co.nz



CREATE, INNOVATE, AND POWER THE FUTURE

WHAT IS THE MANUFACTURING & TECHNOLOGY PATHWAY?

This pathway covers industries that design, produce, and maintain everything from everyday products to complex machinery and advanced technologies.

THIS PATHWAY INCLUDES SECTORS LIKE:

- Engineering and Mechanical Trades
- Electronics and Electrical Manufacturing
- Fabrication and Welding
- Automotive and Aviation Technology
- Robotics, Automation, and Mechatronics
- Product Design and Development

IS THIS THE PATHWAY FOR YOU?

- Do you like working with tools, machines, or computers?
- Are you a problem solver who enjoys fixing and improving things?
- Do you enjoy precision and attention to detail?
- Are you interested in new technologies and how things are made?
- Do you like working in a team or independently to complete projects?

If you answered yes, this pathway offers exciting opportunities where your skills can thrive.

WHAT JOBS COULD I DO?

Entry-Level Jobs

Machine Operator, Electrical Assembler, Apprentice Engineer, Electronics Technician, Production Line Worker

With Training or Experience

Welder or Fabricator, Automotive Technician, CNC Machinist, Automation Technician, Aviation Maintenance Technician

Specialist/Professional Roles

Mechanical Engineer, Robotics Technician, Quality Assurance Manager, Industrial Designer, Manufacturing Engineer

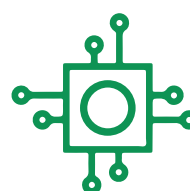
WHAT CAN I EARN?

- Starting wages for entry roles usually range from **\$45,000 – \$55,000/year**.
- Skilled tradespeople and technicians earn between **\$60,000 – \$85,000**.
- Senior and engineering roles can reach **\$90,000+**, with potential for career growth in advanced technologies.

WHY THIS PATHWAY MATTERS

Manufacturing and technology keep industries running, fuel innovation, and create the products we rely on daily.

It's a sector that's always evolving — from traditional engineering to cutting-edge automation and robotics — offering a future full of possibilities.





IT SUPPORT L2-3

LAUNCH YOUR IT JOURNEY: REAL-WORLD SKILLS, REAL EXPERIENCE

Step into the world of tech and get hands-on experience that puts you ahead. At EmployNZ, a leading NZQA Category 1 provider, you'll gain practical skills and industry insight in a supportive, real-world learning environment.

In this course, you won't just learn about IT—you'll build and operate a functioning Help Desk, working as part of a team to solve real support issues. From troubleshooting hardware and fixing network problems to providing software solutions, you'll experience what it's like to be part of an IT support team in action.

Get skilled. Get confident. Get started in IT.

KEY DETAILS

Course delivery Terms 1-3, 1 day per week

Location TGA

NCEA level 2-3

FUTURE PATHWAYS

Diploma in Information and Technology L5, Diploma in Systems Administration L6, Computing or Administration and Technology, L3, Bachelor Degree of Applied Information and Technology, Bachelor's Degree in Computer Science, Computer Engineering, Information and Technology

FUTURE CAREERS

Computer Support Technician, Database/ Systems Administrator, Network Engineer, Network Security, Software Developer, Project Manager, Web Developer, Web Designer

INTRO TO IT SUPPORT L2

	UNIT STD	LEVEL	CREDITS
29772	Manage files and folders using digital devices	2	2
29782	Demonstrate knowledge of computing hardware, software and terminology to select digital tools for specified purposes	2	5
29783	Implement basic security when using digital devices and software	2	3
29781	Use the internet and common digital devices and software to gather information and connect with other users and devices	2	7
TOTAL			17

IT SUPPORT L3

	UNIT STD	LEVEL	CREDITS
29796	Collaborate effectively with others in a digital environment	3	7
29793	Investigate, plan, design and create digital outcome solutions to meet the requirements of a specified brief	3	5
29789	Use a presentation application to produce an interactive multimedia presentation	3	3
29798	Troubleshoot, fix and escalate a range of common hardware and software problems	3	3
TOTAL			18



GAME DESIGN L3

CREATE YOUR OWN ADVENTURE

Dive into the world of video game creation with this hands-on course. You'll explore the history and evolution of games—from classic board games to today's digital hits—and analyse different genres to understand what makes games fun and engaging.

Using industry-standard design software, you'll learn the key elements, mechanics, and rule sets behind successful games. Then, bring your ideas to life by designing and developing your very own game based on a genre you choose.

KEY DETAILS

Course delivery Terms 1–3, 1 day per week

Location ROT, TGA

NCEA level 3

FUTURE PATHWAYS

NZ Certificate in Communications Media (L4), NZ Certificate in Arts & Design (L4), NZ Certificate in Information Technology Essentials (L4), Bachelor of Creative Industries: major in Fashion Design, Graphic Design or Visual Arts (L7), Bachelor of Applied Information Technology (L7)

FUTURE CAREERS

Social Media and Content Creation, Film and Television Production, Commercial Freelance Video Capture and Production, Graphic Designer, Marketing Content Creator, Web Designer, 3D Technologies, AR/VR Technologies Content Creator, Arts Education Practitioner, Arts Administrator, Fashion Designer, Fashion Technician, Sample Machinist, Pattern Engineer, Production Designer, Buyer, Retailer, Costume Design, Roles in software development solutions – Design, Coding, Scripting and Testing, Programming, Education and Small Business Software, Self Employed Consultant or Contractor

	UNIT STD	LEVEL	CREDITS
18741	Create a computer program to provide a solution to a problem	3	6
29790	Use digital tools to create and monitor a project plan	3	3
29791	Capture and prepare digital media for integration into other applications	3	2
29793	Investigate, plan, design and create digital outcome solutions to meet the requirements of a specified brief	3	5
29797	Synchronise data across digital devices and multiple platforms	3	2
29798	Troubleshoot, fix and escalate a range of common hardware and software problems	3	3
TOTAL			21

*Toi Ohomai course details and locations may change. Please contact careers advisers for the most up to date information.



SPARK YOUR POTENTIAL L2

STEP INTO THE WORLD OF ELECTRICITY AND POWER UP YOUR POTENTIAL!

This exciting, hands-on course gives you the chance to experience what it's really like to work as an electrician. From wiring circuits to exploring the wide range of career paths in the electrical industry, you'll get a real taste of the trade through practical, real-world tasks. Whether you're curious about the tools of the trade or already thinking about a career in electrical work, this course helps you make confident choices about further study or employment.

KEY DETAILS

Course delivery	Terms 1-3, 1 day per week
Location	WHK, ROT, TGA
NCEA level	2

FUTURE PATHWAYS & CAREERS

To provide the student with the opportunity to explore and experience the work of an electrician exposing them to the varied opportunities in electrical and to assist them in making an informed decision for further study and/or employment

	UNIT STD	LEVEL	CREDITS
30657	Isolate low-voltage electrical subcircuits and perform basic checks and tests to confirm isolation	2	1
30658	Demonstrate knowledge of fundamental electrical safety in the workplace	2	2
6401	Provide first aid	2	1
6402	Provide basic life support	2	2
29465	Apply knowledge of electrical safety and safe working practices for electrical workers	3	6
750	Demonstrate knowledge of electrical test instruments and take measurements	2	2
29474	Demonstrate and apply knowledge of electrical fittings and components and their installation	3	6
6705	Test electrical appliances for safety	2	3
TOTAL			23



ELECTRICAL PRE-TRADE PROGRAMME L3

KICKSTART YOUR ELECTRICAL CAREER WITH NZ'S LEADING TRAINING EXPERTS

Electricians are in demand—and ETCO has over 30 years of experience helping students launch their careers. Our Pre-Trade Programme (L3) teaches you essential electrical theory and practical skills, guided by registered electricians.

You'll learn everything from fault diagnosis to safe work practices and how to work professionally and ethically in the industry. Plus, you can apply for an ETCO apprenticeship during the course and find out if you've got a job before you graduate. Get ready to ignite your future with ETCO—the trusted name in electrical training.

KEY DETAILS

Course delivery	Terms 1-4, 3 days per week
Location	WHK, ROT, TGA, TPO
NCEA level	3

FUTURE PATHWAYS

NZ Certificate in Electrical Engineering Theory and Practice (Trade) L4, Apprenticeships: General Electrical, Electricity Supply

FUTURE CAREERS

Pre-Trade Programme Graduates: Electrical Wholesaling, Retailing, Electrical Meter Reading, Electrical Appliance Service Technician, Electrical Service Technician

Electrical Apprentices: Business Ownership, Electrical Estimator, Inspector, Project Manager, Automation, Robotics, Supervisor, Solar and Wind Energy, Marine, Teaching

	UNIT STD	LEVEL	CREDITS
15847	Knowledge of mathematics and mechanics for electrical trades	2	4
15848	Safeguards for use with portable electrical appliances	2	3
15849	Manual soldering and de-soldering	2	2
15852	Isolate and test low voltage subcircuits	2	2
15855	Knowledge of circuit protection	3	3
25070	Properties of conductors, insulators, and semiconductors	2	7
25071	Knowledge of electromotive force (e.m.f.) production	2	3
25072	Electromagnetic theory	2	5
29465	Electrical safety and safe working practices	3	6



ELECTRICAL PRE-TRADE PROGRAMME CONTINUED

29466	Legislation and standards for electrical workers	3	2
29467	Ethical work practices in the electrical industry	3	2
29468	Safe plant isolation and electrical testing	3	5
29469	Select and install flexible cords and cables	2	4
29470	Electric motor and generator operation	3	2
29471	Electric switchboards and lighting circuits	3	2
29473	Transformers (single and three-phase)	3	3
29474	Installation of fittings and components	3	6
29476	Capacitance, inductance, power factor	3	7
29477	NZ electricity grid and protection	3	2
29479	Draw and explain electrical diagrams	3	4
29480	Circuit design, control, and protection	3	6
29481	Lighting installation and repair	3	5
29483	Single/three-phase rotating machines	3	4
29484	Intermediate knowledge for trades	3	1
29557	Fault identification and location	3	4
29749	Registration theory and practice (Stage 1)	4	2
29753	Registration theory and practice (Stage 2)	4	2
30645	Appliance serviceperson legislation	3	3
30657	Isolation of low voltage subcircuits	2	1
30658	Electrical safety in the workplace	2	2
31831	EST theory and legislation	4	4
1204	Knowledge of earthing	3	2
6401	Provide first aid	2	1
6402	Provide basic life support	2	1
6705	Test appliances for safety	3	3
750	Demonstrate knowledge of electrical test instruments and take measurements	2	2
15866	Demonstrate and apply knowledge of and the procedures for the examination of and testing of electrical installations	2	3
TOTAL		120	



SOLID WOOD MANUFACTURING L2-3

HANDS-ON TIMBER TRAINING WITH REAL INDUSTRY EXPERIENCE

Train two days a week at a local timber mill through this hands-on course in partnership with Wood Wise. Learn timber grading, pole and post manufacturing, and explore the full timber production process while earning credits toward the NZ Certificate in Solid Wood Manufacturing.

Students are treated like trainee employees and will be interviewed for placement. Supported by experienced mill staff, you'll gain real industry insight — with opportunities for further training, apprenticeships, or even paid work. A third day of work experience may also be arranged.

KEY DETAILS

Course delivery Terms 1-4, 2 days per week

Location WHK, TGA

NCEA level 2-3

FUTURE PATHWAYS

L3, 4, 5 apprenticeships as a timber machinist, timber grader, saw doctor, finger jointer, sawmilling, manufacturing, maintenance trades, timber treatment, timber kiln drying

FUTURE CAREERS

Project or maintenance engineer, Optimisation technician, Kiln operator, Timber machinist, Quality control / grader, Health and safety or management roles

SOLID WOOD MANUFACTURING

	UNIT STD	LEVEL	CREDITS
22970	Demonstrate employment and interrelationship foundation skills in a wood manufacturing operation	2	10
22973	Demonstrate knowledge of factors that affect the performance of workers in a wood manufacturing operation	2	10
22977	Demonstrate knowledge of workplace risks in a wood manufacturing operation	2	5
736	Demonstrate knowledge of physical characteristics of wood	2	5
27074	Demonstrate Knowledge of Timber grading	2	5
22969	Take and record measurements and make calculations in wood manufacturing	2	3
17971	Demonstrate knowledge of the solid wood manufacturing industry	2	5
729	Measure moisture content of wood products	2	5
& 10 credits from the following		2	
20751	Operate a cross cut saw centre	3	5
8005	Stack timber in packets using mechanical timber stacking system	2	5



Wood Wise LTD
WOOD INDUSTRY SKILLS EDUCATION

WOOD WISE

Please contact the mill site where your student wishes to be considered as a work based training trainee, to set up an interview and to send their application



SOLID WOOD MANUFACTURING CONTINUED

24607	Wrap wood products manually	2	3
164	Tally timber	2	3
165	Handle, sort, and stack timber	2	3
20754	Demonstrate knowledge of mechanical stress grading timber	2	5
156	Demonstrate knowledge of phytosanitary standards in the wood manufacturing industry	2	3
TOTAL			58

POLE, POST & PILE

	UNIT STD	LEVEL	CREDITS
22970	Demonstrate employment and interrelationship foundation skills in a wood manufacturing operation	2	10
22973	Demonstrate knowledge of factors that affect the performance of workers in a wood manufacturing operation	2	10
22977	Demonstrate knowledge of workplace risks in a wood manufacturing operation	2	5
736	Demonstrate knowledge of physical characteristics of wood	2	5
17971	Demonstrate knowledge of the solid wood manufacturing industry	2	5
1252	Demonstrate knowledge of log making	3	5
6916	Demonstrate knowledge of the rules relating to chainsaw use	2	5

156	Demonstrate knowledge of phytosanitary standards in the wood manufacturing industry	2	3
8008	Demonstrate knowledge of log yard operations	2	5
20022	Grade roundwood products	3	8
20751	Operate a cross cut saw centre	3	5
22969	Take and record measurements and make calculations in wood manufacturing	2	3
165	Handle, sort, and stack timber	2	3
6917	Demonstrate basic chainsaw operation	3	12
TOTAL			81

TIMBER MILL WORK BASED TRAINING PARTNERS / SITES

EBOP : SEQUAL LUMBER

Dave Turner david@sequal.nz 021 887 899

TAURANGA : PUKE PINE

David Sandford david@pukepine.co.nz 021 542 154

WOOD WISE

Paul Carpenter paul@woodwise.co.nz 027 270 4431



WOOD WISE LTD
WOOD INDUSTRY SKILLS EDUCATION

WOODWISE

Please contact the mill site where your student wishes to be considered as a work based training trainee, to set up an interview and to send their application



WOOD MANUFACTURING L2

BUILDING PRACTICAL INDUSTRY SKILLS

Kickstart your career in wood manufacturing with practical training at New Zealand's only dedicated sawmill and wood manufacturing plant, right here at our Waipā Campus.

This technical trade offers real-world experience working alongside industry professionals in a busy, operational environment. If you enjoy hands-on work and want to be part of a growing industry fueled by New Zealand's expanding plantation forests, this course sets you up for strong job opportunities and a skilled future.

KEY DETAILS

Course delivery Terms 1-3, 1 day per week

Location ROT

NCEA level 2

FUTURE PATHWAYS

NZ Certificate in Solid Wood Manufacturing (L3) Saw Doctoring and Timber Machining, NZ Certificate in Solid Wood Manufacturing (L4) Laminating, NZ Certificate in Forest Harvesting Operations (L3) Manual Processing and Quality Control, NZ Certificate in Forest Harvesting Operations (L3) Woodsman Programme; Quality Control or Basic Machine Operation

FUTURE CAREERS

Forestry Operations, Machine Repairs, Wood Manufacturing Operator, Saw Doctor

	UNIT STD	LEVEL	CREDITS
159	Demonstrate knowledge of environmental issues in wood manufacturing industries	2	5
22977	Demonstrate knowledge of workplace risks in a wood manufacturing operation	2	5
17964	Demonstrate knowledge of the wood product manufacturing industry	2	5
22978	Demonstrate knowledge of wood product quality	2	5
TOTAL			20

**Toi Ohomai course details and locations may change. Please contact careers advisers for the most up to date information.*



BUILD A GO KART ^{L2}

DESIGN. WELD. RACE.

Take your metalwork skills to the next level by building your own petrol-powered go kart from the ground up.

This hands-on course is perfect for students with some experience in metalwork who are ready to take on a real challenge. You'll learn practical fabrication, assembly, and mechanical skills while constructing a fully functioning go kart. Best of all, you'll have the opportunity to purchase your finished project at the end.

KEY DETAILS

Course delivery Terms 1-3, 1 day per week

Location ROT, TGA

NCEA level 2

FUTURE PATHWAYS

Automotive Engineering (L3), NZ Certificate in Automotive Engineering (L3) - Managed Apprentices

FUTURE CAREERS

Automotive Apprenticeship, Automotive Sales, Automotive Servicing, Brake Servicing, Panel Beaters, Tyre Servicing, Warrant of Fitness Testing

	UNIT STD	LEVEL	CREDITS
29580	Demonstrate good work habits and safe work practices in the automotive industry	2	4
21671	Carry out general engineering tasks in the motor industry	2	4
21685	Use an oxy-acetylene welding plant in the motor industry	2	3
2678	Join steel using the oxyacetylene welding process	2	3
21859	Select and use hand tools and workshop equipment for an automotive application	2	2
2387	Assemble mechanical components under supervision	2	2
30475	Demonstrate knowledge of motor industry engineering tasks	2	2
30476	Demonstrate knowledge of tools and equipment used in the motor industry	2	2
21715	Select and use fastening systems in the motor industry	2	3
TOTAL			25

**Toi Ohomai course details and locations may change. Please contact careers advisers for the most up to date information.*



AUTOMOTIVE ENGINEERING L2

AN INTRODUCTION TO AUTOMOTIVE SYSTEMS AND SKILLS

Build foundational knowledge and hands-on experience to begin your journey in the automotive industry.

This practical, entry-level course introduces students to key automotive systems and workshop processes. Through guided, hands-on tasks, you'll gain a clear understanding of vehicle components, tools, and basic maintenance—providing the perfect starting point for future study or a career in the automotive sector.

KEY DETAILS

Course delivery	Terms 1-3, 1 day per week
Location	ROT, TPO, TGA, TOK, WHK
NCEA level	2

FUTURE PATHWAYS

Automotive Engineering (L3), NZ Certificate in Automotive Engineering (L3) – Managed Apprentices

FUTURE CAREERS

Automotive Apprenticeship, Automotive Sales, Automotive Servicing, Brake Servicing, Panel Beaters, Tyre Servicing, Warrant of Fitness Testing

	UNIT STD	LEVEL	CREDITS
30476	Demonstrate knowledge of tools and equipment used in the motor industry	2	2
21716	Select and apply lubricants and sealants for automotive and related industry applications	2	3
21869	Remove and replace road wheels on a vehicle	2	1
21722	Balance wheels of a vehicle in the motor industry	2	2
30477	Demonstrate knowledge of petrol and diesel engines	2	4
21691	Disassemble and reassemble a single cylinder or multi-cylinder four stroke engine under supervision	2	2
30478	Demonstrate knowledge of automotive lubricants	2	2
21690	Perform general servicing checks on a motor vehicle	2	3
21718	Demonstrate knowledge of hazardous materials used in the motor industry	2	2
29579	Demonstrate knowledge of good work habits and safe work practices in the automotive industry	2	4
TOTAL			25

*Toi Ohomai course details and locations may change. Please contact careers advisers for the most up to date information.



AUTOMOTIVE ENGINEERING L3

DEVELOP ADVANCED WORKSHOP SKILLS AND INDUSTRY KNOWLEDGE

This hands-on course is designed to expand your understanding of automotive engineering through real workshop experience. You'll start with the basics and build a wide range of skills needed to service and repair various makes and models of vehicles.

Students will disassemble, measure, and reassemble engines, and learn how to service engine, transmission, and driveline systems. You'll also work on brake, steering, and suspension systems—developing the technical expertise required in modern automotive workshops.

Completion of STP1 or STP2 is recommended before enrolling in this course.

KEY DETAILS

Course delivery	Terms 1-3, 2 days per week
Location	ROT, TPO, TGA, TOK, WHK
NCEA level	3

FUTURE PATHWAYS

NZ Certificate in Automotive Engineering (L3) - Managed Apprentices, NZ Certificate in Automotive Electrical Engineering (L4)

FUTURE CAREERS

Automotive Apprenticeship, Automotive Sales, Automotive Servicing, Brake Servicing, Panel Beaters, Tyre Servicing, Warrant of Fitness Testing

**Toi Ohomai course details and locations may change. Please contact careers advisers for the most up to date information.*

	UNIT STD	LEVEL	CREDITS
3856	Demonstrate knowledge of carrying out emergency procedures in the automotive and related industries	3	2
30434	Service a vehicle or machine	3	3
30478	Demonstrate knowledge of automotive lubricants	2	2
30479	Service an automotive cooling system	3	3
30480	Demonstrate knowledge of automotive cooling systems and engine coolant	3	2
30890	Demonstrate knowledge of equipment used to test engine mechanical condition	3	2
30515	Remove and refit intake and exhaust system components	3	3
30561	Demonstrate knowledge of drivelines and final drives	3	4
21709	Remove and replace a bolted-on motor body panel in the automotive industry	3	3
5742	Protect electronics when servicing or repairing a vehicle or machine in the automotive industry	3	2
30563	Demonstrate knowledge of automotive charging and starting systems	3	4
30564	Demonstrate knowledge of automotive lighting	3	2
24105	Demonstrate knowledge of wiring and wiring diagrams used in automotive circuits	3	2
29580	Demonstrate good work habits and safe work practices in the automotive industry	2	4
TOTAL			38

ELECTRIC SCOOTER PROJECT L₂

ENGINEERING IN ACTION

A fun, hands-on project where students design and build an electric scooter using repurposed parts. While doing so, they'll learn wiring, mechanical assembly, teamwork, safety practices, and key engineering concepts. This project aims to ignite interest in electrical and mechanical pathways through practical learning and project-based outcomes. Students will earn NZQA Level 2 credits along the way.

KEY DETAILS

Course delivery	Terms 1-3, 1 day per week
Location	ROT, TGA
NCEA level	2

FUTURE PATHWAYS

NZ Cert Electrical level 3 Pre-Trade (L3), NZ Cert in Mechanical Engineering (L3), NZ Cert in Mechanical Engineering (Trade) (L4), NZ Cert in Engineering Fabrication (L4), NZ Diploma in Engineering (L6) Civil Engineering, NZ Engineering – Mechanical, NZ Diploma Engineering – Electrical

FUTURE CAREERS

Engineering Technician, Electrical Apprentice, Mechanical Apprentice, Engineering Fabrication, CAD Technician, Maintenance Engineer Technician, Design Technician, Power Systems Technician, Project Engineer (Junior), Field Service Technician

	UNIT STD	LEVEL	CREDITS
15847	Demonstrate knowledge of mathematics and mechanics for electrical trades	2	4
4432	Demonstrate knowledge of, and convert, units of measure used in engineering	2	2
18239	Demonstrate introductory knowledge of circuit concepts and measurements for electronics	2	5
29672	Assemble fabricated components using mechanical connections	2	2
2387	Assemble mechanical components under supervision	2	2
30658	Demonstrate knowledge of fundamental electrical safety in the workplace	2	2
29655	Manually produce engineering sketches	2	3
29550	Demonstrate basic knowledge of common engineering metals	2	3
TOTAL			23

*Toi Ohomai course details and locations may change. Please contact careers advisers for the most up to date information.

** New course subject to approval.



MECHANICAL ENGINEERING L2

EXPLORING ENGINEERING PATHWAYS

Interested in the dynamic world of engineering but unsure where to start? This one-year L2 course offers you a hands-on introduction to the engineering industry.

While still at school, you'll develop a range of valuable skills that will prepare you either to progress into L3 Engineering studies or to enter the workforce confidently. Discover the opportunities available in mechanical and general engineering as you build a strong foundation for your future career.

KEY DETAILS

Course delivery Terms 1-3, 1 day per week

Location ROT, TGA

NCEA level 2

FUTURE PATHWAYS

NZ Certificate in Mechanical Engineering (L3), NZ Certificate in Mechanical Engineering (Trade) (L4), NZ Certificate in Engineering Fabrication (L4), NZ Diploma in Engineering (L6) Civil Engineering, Electrical Engineering, Mechanical Engineering

FUTURE CAREERS

Machining (manual and CNC), fabrication and welding in steel, stainless steel, and aluminium across industries such as construction, transport, automotive, marine, and dairy. Roles may also include plant maintenance and service technician positions in food processing, forestry, pulp and paper, power generation, and dairy sectors

	UNIT STD	LEVEL	CREDITS
21911	Demonstrate knowledge of safety on engineering worksites	2	2
21912	Apply safe working practices on an engineering worksite	2	2
4433	Select, use, and care for simple measuring devices used in engineering	2	2
2395	Demonstrate and apply knowledge of the selection, use, and care of engineering hand tools	2	4
4436	Select, use, and care for engineering marking-out equipment	2	3
14866	Demonstrate workshop skills for mechanical engineering	2	12
TOTAL			25

*Toi Ohomai course details and locations may change. Please contact careers advisers for the most up to date information.



FOR MORE INFORMATION CONTACT YOUR CAREERS ADVISOR OR...

BAY OF PLENTY FUTURES ACADEMY

ONLINE

www.futuresacademy.nz

 BOPFANZ

LOCATION

c/- Trident High School

Arawa Road

Whakatāne 3120

CONTACTS

MANAGER

Cindy Lee

manager@futuresacademy.nz

021 058 0565

BUSINESS SUPPORT & TRANSPORT

Stacey Maxwell

business.support@futuresacademy.nz

027 214 8766

ADMIN, ROLL & PASTORAL CARE

Sue Morton

admin@futuresacademy.nz

EBOP HUB

Kawerau Teen Parent Education Centre
 Ōpōtiki College
 Putauaki Kura
 Rangiaitea (Whakatāne School for Young Parents)
 Rangitaiki College
 Tarawera High School
 Te Kura Mana Māori o Whangaparaoa
 Te Kura Māori-Ā-Rohe o Waiohau
 Te Kura Kaupapa Māori O Te Orini ki Ngāti Awa
 Te Kura o Te Whānau a Apanui
 Te Wharekura o Ruatoki
 Trident High School
 Whakatāne High School

PROVIDERS

ETCO
 Hair to Train
 Ōpōtiki College
 Tarawera College
 Te Wānanga o Aotearoa
 Toi Ohomai
 Trident High School
 Whakatāne High School
 Woodwise / Timber Trades Training

WBOP HUB

Aquinas College
 Bethlehem College
 Katikati College
 Mount Maunganui College
 Ōtūmoetai College
 Papamoa College
 Tauranga Boys' College
 Tauranga Girls' College
 Te Puke High School
 Te Kura Kaupapa Māori o Te Kura Kōkiri
 Te Wharekura o Mauao

PROVIDERS

Dive Zone
 Employ NZ
 ETCO
 Hair to Train
 Toi Ohomai
 Woodwise / Timber Trades Training

ROTORUA HUB

John Paul College
 Murupara Area School
 Reporoa College
 Rotorua Girls' High School
 Rotorua Lakes High School
 Te Āhuru Mōwai (Rotorua School for Young Parents)
 Te Kura Kaupapa Māori o Huiarau
 Te Kura Kaupapa Māori o Hurungaterangi
 Te Kura Kaupapa Motuhake O Tawhiuau
 Te Kura Kaupapa Māori o Ruamatā
 Te Kura o Te Koutu
 Te Wharekura o Ngāti Rongomai
 Western Heights High School

PROVIDERS

Hair to Train
 Takitini / Wera
 Te Wānanga o Aotearoa
 Toi Ohomai
 Woodwise / Timber Trades Training

TOKOROA HUB

Tokoroa High School

PROVIDERS

Toi Ohomai

Bay of Plenty Region

TAUPŌ HUB

Tauhara College
 Taupō-nui-a-Tia College
 Te Kura Kaupapa Māori o Whakarewa i te Reo ki Tūwharetoa
 Te Kura o Hirangi
 Tongariro School

PROVIDERS

ETCO
 Hair to Train
 Te Kura o Hirangi
 Te Wānanga o Aotearoa
 Toi Ohomai

ANY STATE FUNDED SCHOOL IN THE BAY OF PLENTY CAN JOIN THE FUTURES ACADEMY BY CONTACTING THE MANAGER.

Your future starts HERE!



WWW.FUTURESACADEMY.NZ

FUTURES ACADEMY C/- LEAD PROVIDER, TRIDENT HIGH SCHOOL
ARAWA ROAD WHAKATĀNE 3120